

Anti-Phospho-BCL2-Thr69 antibody (46-95 aa) (STJ90193)

GENERAL INFORMATION

Product Type	Primary antibodies
Applications	IHC/IF/ELISA
Host / Source	Rabbit
Reactivity	Human/Rat/Mouse

PRODUCT PROPERTIES

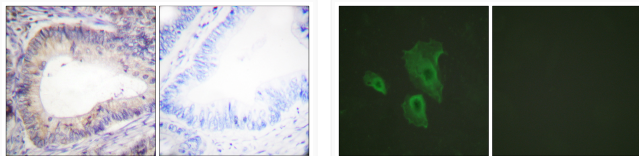
Clonality	Polyclonal
Concentration	1 mg/mL
Conjugation	Unconjugated
Purification	The antibody was affinity-purified from rabbit antiserum by affinity-chromatography using epitope-specific immunogen.
Dilution Range	IHC 1:100-1:300 IF 1:200-1:1000 ELISA 1:20000
Formulation	Liquid in PBS containing 50% Glycerol, 0.5% BSA and 0.02% Sodium Azide.
Isotype	IgG
Molecular Weight	Calculated: 26kD
Storage Instruction	Store at -20°C for up to 1 year from the date of receipt, and avoid repeat freeze-thaw cycles.

TARGET INFORMATION

Gene ID	596
Gene Symbol	BCL2
UniProt ID	BCL2_HUMAN
Immunogen Region	46-95 aa
Specificity	Phospho-Bcl-2 (T69) Polyclonal Antibody detects endogenous levels of Bcl-2 protein only when phosphorylated at T69.

ADDITIONAL INFORMATION

Note STRICTLY FOR FURTHER SCIENTIFIC RESEARCH USE ONLY (RUO). MUST NOT TO BE USED IN DIAGNOSTIC OR THERAPEUTIC APPLICATIONS.



Immunohistochemistry analysis of paraffin-embedded human colon carcinoma, using BCL-2 (Phospho-Thr69) Antibody. The picture on the right is blocked with the phospho peptide.

Immunofluorescence analysis of HeLa cells, using BCL-2 (Phospho-Thr69) Antibody. The picture on the right is blocked with the phospho peptide.