

Anti-Phospho-AKT1-Ser246 antibody (212-261 aa) (STJ90165)

GENERAL INFORMATION

Product Type	Primary antibodies
Applications	WB/IHC/IF/ELISA
Host / Source	Rabbit
Reactivity	Human/Mouse/Rat

PRODUCT PROPERTIES

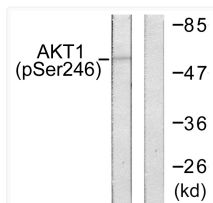
Clonality	Polyclonal
Concentration	1 mg/mL
Conjugation	Unconjugated
Purification	The antibody was affinity-purified from rabbit antiserum by affinity-chromatography using epitope-specific immunogen.
Dilution Range	WB 1:500-1:2000 IHC 1:100-1:300 IF 1:200-1:1000 ELISA 1:5000
Formulation	Liquid in PBS containing 50% Glycerol, 0.5% BSA and 0.02% Sodium Azide.
Isotype	IgG
Molecular Weight	Observed: 56kD
Storage Instruction	Store at -20°C for up to 1 year from the date of receipt, and avoid repeat freeze-thaw cycles.

TARGET INFORMATION

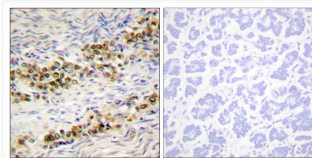
Gene ID	207
Gene Symbol	AKT1
UniProt ID	AKT1_HUMAN
Immunogen Region	212-261 aa
Specificity	Phospho-Akt1 (S246) Polyclonal Antibody detects endogenous levels of Akt1 protein only when phosphorylated at S246.

ADDITIONAL INFORMATION

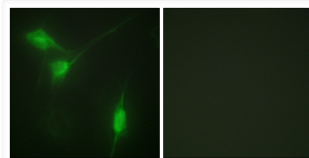
Note **STRICTLY FOR FURTHER SCIENTIFIC RESEARCH USE ONLY (RUO). MUST NOT TO BE USED IN DIAGNOSTIC OR THERAPEUTIC APPLICATIONS.**



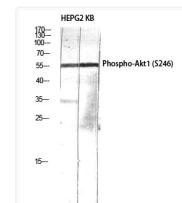
Western blot analysis of lysates from HeLa cells treated with Etoposide 25uM 24h, using Akt (Phospho-Ser246) Antibody. The lane on the right is blocked with the phospho peptide.



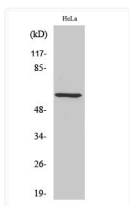
Immunohistochemistry analysis of paraffin-embedded human ovary, using Akt (Phospho-Ser246) Antibody. The picture on the right is blocked with the phospho peptide.



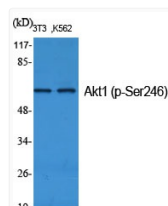
Immunofluorescence analysis of NIH/3T3 cells, using Akt (Phospho-Ser246) Antibody. The picture on the right is blocked with the phospho peptide.



Western blot analysis of HEPG2 KB using Phospho-Akt1 (S246) Polyclonal Antibody diluted at 1: 1000.



Western blot analysis of HeLa cells using Phospho-Akt1 (S246) Polyclonal Antibody diluted at 1: 1000.



Western blot analysis of various cells using Phospho-Akt1 (S246) Polyclonal Antibody diluted at 1: 1000.