

Anti-Acetyl-XRCC6-Lys331 antibody (291-340 aa) (STJ90158)

GENERAL INFORMATION

Product Type	Primary antibodies
Applications	WB/IHC
Host / Source	Rabbit
Reactivity	Human/Mouse/Rat

PRODUCT PROPERTIES

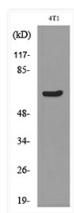
Clonality	Polyclonal
Concentration	1 mg/mL
Conjugation	Unconjugated
Purification	The antibody was affinity-purified from rabbit antiserum by affinity-chromatography using epitope-specific immunogen.
Dilution Range	WB 1:500-2000 IHC-P 1:50-300
Formulation	Liquid in PBS containing 50% Glycerol, 0.5% BSA and 0.02% Sodium Azide.
Isotype	IgG
Molecular Weight	Observed: 70kD
Storage Instruction	Store at -20°C for up to 1 year from the date of receipt, and avoid repeat freeze-thaw cycles.

TARGET INFORMATION

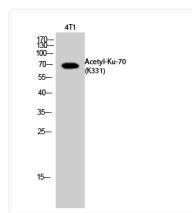
Gene ID	2547
Gene Symbol	XRCC6
UniProt ID	XRCC6_HUMAN
Immunogen Region	291-340 aa
Specificity	Acetyl-Ku-70 (K331) Polyclonal Antibody detects endogenous levels of Ku-70 protein only when acetylated at K331.

ADDITIONAL INFORMATION

Note **STRICTLY FOR FURTHER SCIENTIFIC RESEARCH USE ONLY (RUO). MUST NOT TO BE USED IN DIAGNOSTIC OR THERAPEUTIC APPLICATIONS.**



Western blot analysis of lysate from 4T1 cells, using Ku70 (Acetyl-Lys331) Antibody.



Western blot analysis of 4T1 cells using Acetyl-Ku-70 (K331) Polyclonal Antibody. Secondary antibody was diluted at 1:20000