

Anti-Acetyl-BMAL1-Lys538 antibody (501-550 aa) (STJ90156)

GENERAL INFORMATION

Product Type	Primary antibodies
Applications	WB/ELISA
Host / Source	Rabbit
Reactivity	Human/Mouse/Rat

PRODUCT PROPERTIES

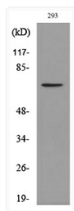
Clonality	Polyclonal
Concentration	1 mg/mL
Conjugation	Unconjugated
Purification	The antibody was affinity-purified from rabbit antiserum by affinity-chromatography using epitope-specific immunogen.
Dilution Range	WB 1:500-1:2000 ELISA 1:20000
Formulation	Liquid in PBS containing 50% Glycerol, 0.5% BSA and 0.02% Sodium Azide.
Isotype	IgG
Molecular Weight	Observed: 70kD
Storage Instruction	Store at -20°C for up to 1 year from the date of receipt, and avoid repeat freeze-thaw cycles.

TARGET INFORMATION

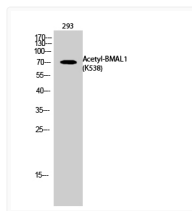
Gene ID	406
Gene Symbol	BMAL1
UniProt ID	BMAL1_HUMAN
Immunogen Region	501-550 aa
Specificity	Acetyl-BMAL1 (K538) Polyclonal Antibody detects endogenous levels of BMAL1 protein only when acetylated at K538.

ADDITIONAL INFORMATION

Note **STRICTLY FOR FURTHER SCIENTIFIC RESEARCH USE ONLY (RUO). MUST NOT TO BE USED IN DIAGNOSTIC OR THERAPEUTIC APPLICATIONS.**



Western blot analysis of lysate from 293 cells, using BMAL1 (Acetyl-Lys538) Antibody.



Western blot analysis of 293 cells using Acetyl-BMAL1 (K538) Polyclonal Antibody. Secondary antibody was diluted at 1:20000