

Anti-Acetyl-TUBA1A-Lys40 antibody (1-50 aa) (STJ90154)

GENERAL INFORMATION

Product Type	Primary antibodies
Applications	WB/IHC/IF/ELISA
Host / Source	Rabbit
Reactivity	Human/Mouse/Rat

PRODUCT PROPERTIES

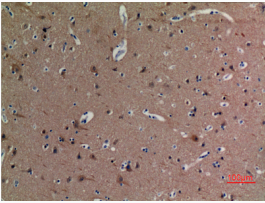
Clonality	Polyclonal
Concentration	1 mg/mL
Conjugation	Unconjugated
Purification	The antibody was affinity-purified from rabbit antiserum by affinity-chromatography using epitope-specific immunogen.
Dilution Range	WB 1:500-1:2000 IHC-P 1:100-300 ELISA 1:20000 IF 1:50-200
Formulation	Liquid in PBS containing 50% Glycerol, 0.5% BSA and 0.02% Sodium Azide.
Isotype	IgG
Molecular Weight	Observed: 50kD
Storage Instruction	Store at -20°C for up to 1 year from the date of receipt, and avoid repeat freeze-thaw cycles.

TARGET INFORMATION

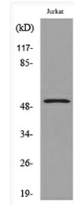
Gene ID	7846
Gene Symbol	TUBA1A
UniProt ID	TBA1A_HUMAN
Immunogen Region	1-50 aa
Specificity	Acetyl-Tubulin Alpha (K40) Polyclonal Antibody detects endogenous levels of Tubulin Alpha protein only when acetylated at K40.

ADDITIONAL INFORMATION

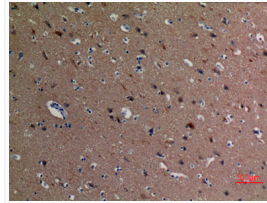
Note STRICTLY FOR FURTHER SCIENTIFIC RESEARCH USE ONLY (RUO). MUST NOT TO BE USED IN DIAGNOSTIC OR THERAPEUTIC APPLICATIONS.



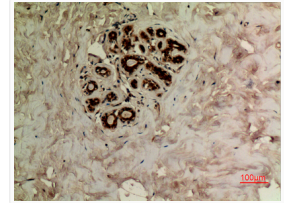
Immunohistochemical analysis of paraffin-embedded human-brain, antibody was diluted at 1:100



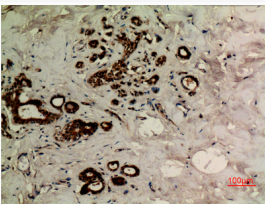
Western blot analysis of lysate from Jurkat cells, using TUBA1A (Acetyl-Lys40) Antibody.



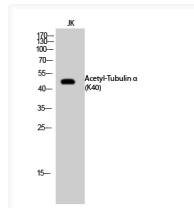
Immunohistochemical analysis of paraffin-embedded human-brain, antibody was diluted at 1:100



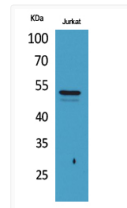
Immunohistochemical analysis of paraffin-embedded human-breast, antibody was diluted at 1:100



Immunohistochemical analysis of paraffin-embedded human-breast, antibody was diluted at 1:100



Western blot analysis of JK cells using Acetyl-Tubulin Alpha (K40) Polyclonal Antibody. Secondary antibody was diluted at 1:20000



Western blot analysis of Jurkat cells using Acetyl-Tubulin Alpha (K40) Polyclonal Antibody. Secondary antibody was diluted at 1:20000