

Anti-Acetyl-E2F4-Lys96 antibody (61-110 aa) (STJ90140)

GENERAL INFORMATION

Product Type	Primary antibodies
Applications	WB/ELISA
Host / Source	Rabbit
Reactivity	Human/Mouse/Rat

PRODUCT PROPERTIES

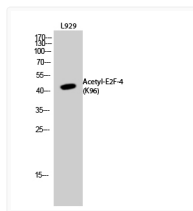
Clonality	Polyclonal
Concentration	1 mg/mL
Conjugation	Unconjugated
Purification	The antibody was affinity-purified from rabbit antiserum by affinity-chromatography using epitope-specific immunogen.
Dilution Range	WB 1:500-1:2000 ELISA 1:20000
Formulation	Liquid in PBS containing 50% Glycerol, 0.5% BSA and 0.02% Sodium Azide.
Isotype	IgG
Molecular Weight	Observed: 43kD
Storage Instruction	Store at -20°C for up to 1 year from the date of receipt, and avoid repeat freeze-thaw cycles.

TARGET INFORMATION

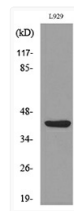
Gene ID	1874
Gene Symbol	E2F4
UniProt ID	E2F4_HUMAN
Immunogen Region	61-110 aa
Specificity	Acetyl-E2F-4 (K96) Polyclonal Antibody detects endogenous levels of E2F-4 protein only when acetylated at K96.

ADDITIONAL INFORMATION

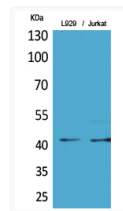
Note STRICTLY FOR FURTHER SCIENTIFIC RESEARCH USE ONLY (RUO). MUST NOT TO BE USED IN DIAGNOSTIC OR THERAPEUTIC APPLICATIONS.



Western blot analysis of L929 cells using Acetyl-E2F-4 (K96) Polyclonal Antibody. Secondary antibody was diluted at 1:20000



Western blot analysis of lysate from L929 cells, using E2F4 (Acetyl-Lys96) Antibody.



Western blot analysis of L929, Jurkat cells using Acetyl-E2F-4 (K96) Polyclonal Antibody.. Secondary antibody was diluted at 1:20000