

Anti-Acetyl-APEX1-Lys7 antibody (1-50 aa) (STJ90138)

GENERAL INFORMATION

Product Type	Primary antibodies
Applications	WB/IHC
Host / Source	Rabbit
Reactivity	Human/Rat/Mouse

PRODUCT PROPERTIES

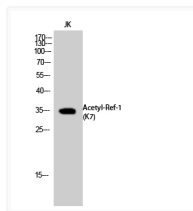
Clonality	Polyclonal
Concentration	1 mg/mL
Conjugation	Unconjugated
Purification	The antibody was affinity-purified from rabbit antiserum by affinity-chromatography using epitope-specific immunogen.
Dilution Range	WB 1:500-2000 IHC-P 1:50-300
Formulation	Liquid in PBS containing 50% Glycerol, 0.5% BSA and 0.02% Sodium Azide.
Isotype	IgG
Molecular Weight	Observed: 35kD
Storage Instruction	Store at -20°C for up to 1 year from the date of receipt, and avoid repeat freeze-thaw cycles.

TARGET INFORMATION

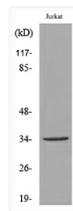
Gene ID	328
Gene Symbol	APEX1
UniProt ID	APEX1_HUMAN
Immunogen Region	1-50 aa
Specificity	Acetyl-Ref-1 (K7) Polyclonal Antibody detects endogenous levels of Ref-1 protein only when acetylated at K7.

ADDITIONAL INFORMATION

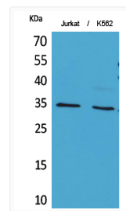
Note **STRICTLY FOR FURTHER SCIENTIFIC RESEARCH USE ONLY (RUO). MUST NOT TO BE USED IN DIAGNOSTIC OR THERAPEUTIC APPLICATIONS.**



Western blot analysis of JK cells using Acetyl-Ref-1 (K7) Polyclonal Antibody. Secondary antibody was diluted at 1:20000



Western blot analysis of lysate from Jurkat cells, using APE1 (Acetyl-Lys7) Antibody.



Western blot analysis of Jurkat, K562 cells using Acetyl-Ref-1 (K7) Polyclonal Antibody.. Secondary antibody was diluted at 1:20000