

Anti-Acetyl-EIF5A2-K47 antibody (11-60 aa) (STJ90136)

GENERAL INFORMATION

Product Type	Primary antibodies
Applications	WB/ELISA
Host / Source	Rabbit
Reactivity	Human/Mouse/Rat

PRODUCT PROPERTIES

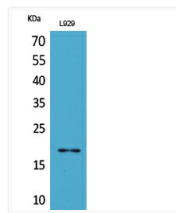
Clonality	Polyclonal
Concentration	1 mg/mL
Conjugation	Unconjugated
Purification	The antibody was affinity-purified from rabbit antiserum by affinity-chromatography using epitope-specific immunogen.
Dilution Range	WB 1:500-1:2000 ELISA 1:20000
Formulation	Liquid in PBS containing 50% Glycerol, 0.5% BSA and 0.02% Sodium Azide.
Isotype	IgG
Molecular Weight	Calculated: 17kD
Storage Instruction	Store at -20°C for up to 1 year from the date of receipt, and avoid repeat freeze-thaw cycles.

TARGET INFORMATION

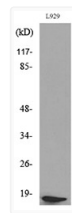
Gene ID	56648
Gene Symbol	EIF5A2
UniProt ID	IF5A2_HUMAN
Immunogen Region	11-60 aa
Specificity	Acetyl-eIF5A/eIF5A2 (K47) Polyclonal Antibody detects endogenous levels of eIF5A/eIF5A2 protein only when acetylated at K47.

ADDITIONAL INFORMATION

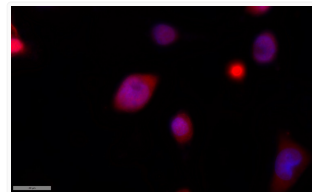
Note STRICTLY FOR FURTHER SCIENTIFIC RESEARCH USE ONLY (RUO). MUST NOT TO BE USED IN DIAGNOSTIC OR THERAPEUTIC APPLICATIONS.



Western blot analysis of L929 lysate using antibody diluted at 1:1000. Secondary antibody was STJ90136



Western blot analysis of lysate from L929 cells, using eIF5A (Acetyl-Lys47) antibody. STJ90136



Immunofluorescence analysis of MCF7 cells. 1, Primary antibody was diluted at 1:100 (4°C overnight). 2, Goat Anti-Rabbit STJ90136