

## Anti-Acetyl-Histone H4-Lys8 antibody (1-50 aa) (STJ90127)

### GENERAL INFORMATION

|               |                        |
|---------------|------------------------|
| Product Type  | Primary antibodies     |
| Applications  | WB/IHC/IF/ELISA        |
| Host / Source | Rabbit                 |
| Reactivity    | Human/Mouse/Rat/Monkey |

### PRODUCT PROPERTIES

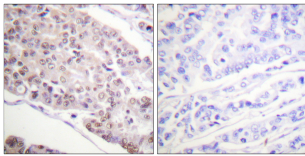
|                     |   |
|---------------------|---|
| Clonality           | Polyclonal  |
| Concentration       | 1 mg/mL   |
| Conjugation         | Unconjugated  |
| Purification        | The antibody was affinity-purified from rabbit antiserum by affinity-chromatography using epitope-specific immunogen. |
| Dilution Range      | WB 1:500-1:2000<br>IHC 1:100-1:300<br>IF 1:200-1:1000<br>ELISA 1:5000   |
| Formulation         | Liquid in PBS containing 50% Glycerol, 0.5% BSA and 0.02% Sodium Azide.   |
| Isotype             | IgG   |
| Molecular Weight    | Observed: 11kD  |
| Storage Instruction | Store at -20°C for up to 1 year from the date of receipt, and avoid repeat freeze-thaw cycles.                        |

### TARGET INFORMATION

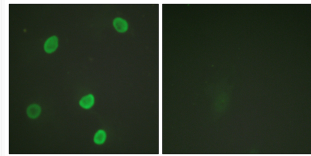
|                  |  |
|------------------|--|
| Gene ID          | <a href="#">121504/554313/8294/8359/8360/8361/8362/8363/8364/8365/8366/8367/8368/8370</a>                              |
| Gene Symbol      | <a href="#">H4C1.H4C2.H4C3.H4C4.H4C5.H4C6.H4C8.H4C9.H4C11.H4C12.H4C13.H4C14.H4C15.H4C16</a>                            |
| UniProt ID       | <a href="#">H4_HUMAN</a>   |
| Immunogen Region | 1-50 aa  |
| Specificity      | Acetyl-Histone H4 (K8) Polyclonal Antibody detects endogenous levels of Histone H4 protein only when acetylated at K8. |

### ADDITIONAL INFORMATION

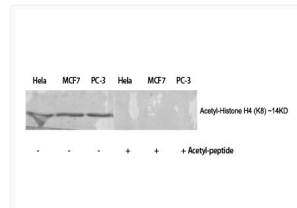
Note STRICTLY FOR FURTHER SCIENTIFIC RESEARCH USE ONLY (RUO). MUST NOT TO BE USED IN DIAGNOSTIC OR THERAPEUTIC APPLICATIONS.



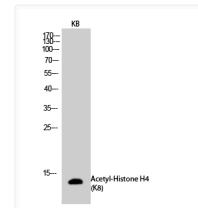
Immunohistochemistry analysis of paraffin-embedded human breast carcinoma tissue, using Histone H4 (Acetyl-Lys8) Antibody. The picture on the right is blocked with the synthesized peptide.



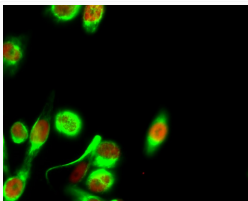
Immunofluorescence analysis of HeLa cells, using Histone H4 (Acetyl-Lys8) Antibody. The picture on the right is blocked with the synthesized peptide.



Western blot analysis of various cells using Acetyl-Histone H4 (K8) Polyclonal Antibody diluted at 1 : 500. Secondary antibody was diluted at 1:20000



Western blot analysis of KB cells using Acetyl-Histone H4 (K8) Polyclonal Antibody diluted at 1 : 500. Secondary antibody was diluted at 1:20000



Immunofluorescence analysis of HeLa cell. 1, Histone H4 (Acetyl Lys8) Polyclonal Antibody (red) was diluted at 1:200 (4°C overnight). HER2 monoclonal antibody (11H9) (green) was diluted at 1:200 (4°C overnight). 2, Goat Anti Rabbit Alexa Fluor 594 Catalog: (NA was diluted at 1:1000 (room temperature, 50min). Goat Anti Mouse Alexa Fluor 488 Catalog: (NA was diluted at 1:1000 (room temperature, 50min).