

## Anti-Acetyl-Histone H3-Lys27 antibody (11-60 aa) (STJ90125)

### GENERAL INFORMATION

Product Type	Primary antibodies
Applications	WB/IHC/IF/IP/ELISA
Host / Source	Rabbit
Reactivity	Human/Mouse/Rat/Monkey/A.thaliana

### PRODUCT PROPERTIES

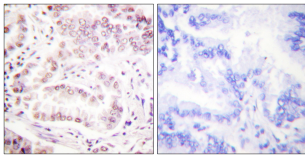
Clonality	Polyclonal
Concentration	1 mg/mL
Conjugation	Unconjugated
Purification	The antibody was affinity-purified from rabbit antiserum by affinity-chromatography using epitope-specific immunogen.
Dilution Range	WB 1:500-1:2000 IHC 1:100-1:300 IF 1:200-1:1000 IP 1:200 ELISA 1:5000
Formulation	Liquid in PBS containing 50% Glycerol, 0.5% BSA and 0.02% Sodium Azide.
Isotype	IgG
Molecular Weight	Observed: 17kD
Storage Instruction	Store at -20°C for up to 1 year from the date of receipt, and avoid repeat freeze-thaw cycles.

### TARGET INFORMATION

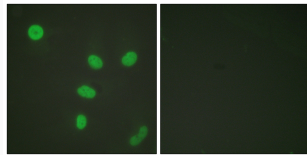
Gene ID	<a href="#">8350/8351/8352/8353/8354/8355/8356/8357/8358/8968</a> <a href="#">1</a>
Gene Symbol	<a href="#">H3C1.H3C2.H3C3.H3C4.H3C6.H3C7.H3C8.H3C10.H3C11.H3C12</a> <a href="#">H31_HUMAN</a> <a href="#">H32_HUMAN</a> <a href="#">H33_HUMAN</a> <
Immunogen Region	11-60 aa
Specificity	Acetyl-Histone H3 (K27) Polyclonal Antibody detects endogenous levels of Histone H3 protein only when acetylated at K27.

### ADDITIONAL INFORMATION

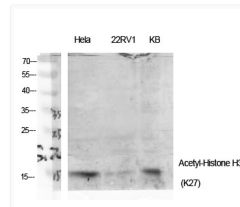
Note STRICTLY FOR FURTHER SCIENTIFIC RESEARCH USE ONLY (RUO). MUST NOT TO BE USED IN DIAGNOSTIC OR THERAPEUTIC APPLICATIONS.



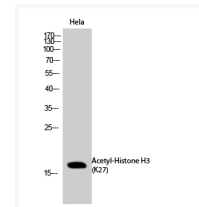
Immunohistochemistry analysis of paraffin-embedded human lung carcinoma tissue, using Histone H3 (Acetyl-Lys27) Antibody. The picture on the right is blocked with the synthesized peptide.



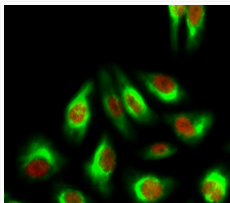
Immunofluorescence analysis of HeLa cells, using Histone H3 (Acetyl-Lys27) Antibody. The picture on the right is blocked with the synthesized peptide.



Western blot analysis of various cells using Acetyl-Histone H3 (K27) Polyclonal Antibody diluted at 1:2000. Secondary antibody was diluted at 1:20000



Western blot analysis of HeLa cells using Acetyl-Histone H3 (K27) Polyclonal Antibody diluted at 1:2000. Secondary antibody was diluted at 1:20000



Immunofluorescence analysis of HeLa cell. 1, Histone H3 (Acetyl Lys27) Polyclonal Antibody (red) was diluted at 1:200 (4°C overnight). CY5 monoclonal antibody (4B10) (green) was diluted at 1:200 (4°C overnight). 2, Goat Anti Rabbit Alexa Fluor 594 Catalog: (NA) was diluted at 1:1000 (room temperature, 50min). Goat Anti Mouse Alexa Fluor 488 Catalog: (NA) was diluted at 1:1000 (room temperature, 50min).