

Anti-Acetyl-H2BC12L-Lys15 antibody (1-50 aa) (STJ90120)

GENERAL INFORMATION

Product Type	Primary antibodies
Applications	WB/IHC/IF/ELISA
Host / Source	Rabbit
Reactivity	Human/Mouse

PRODUCT PROPERTIES

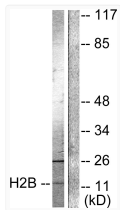
Clonality	Polyclonal
Concentration	1 mg/mL
Conjugation	Unconjugated
Purification	The antibody was affinity-purified from rabbit antiserum by affinity-chromatography using epitope-specific immunogen.
Dilution Range	WB 1:500-1:2000 IHC 1:100-1:300 IF 1:200-1:1000 ELISA 1:5000
Formulation	Liquid in PBS containing 50% Glycerol, 0.5% BSA and 0.02% Sodium Azide.
Isotype	IgG
Molecular Weight	Observed: 20kD
Storage Instruction	Store at -20°C for up to 1 year from the date of receipt, and avoid repeat freeze-thaw cycles.

TARGET INFORMATION

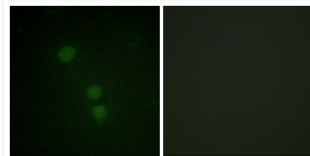
Gene ID	54145
Gene Symbol	H2BC12L
UniProt ID	H2BFS_HUMAN
Immunogen Region	1-50 aa
Specificity	Acetyl-Histone H2B (K15) Polyclonal Antibody detects endogenous levels of Histone H2B protein only when acetylated at K15.

ADDITIONAL INFORMATION

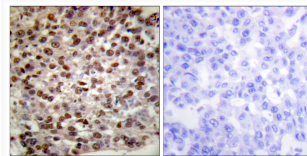
Note **STRICTLY FOR FURTHER SCIENTIFIC RESEARCH USE ONLY (RUO). MUST NOT TO BE USED IN DIAGNOSTIC OR THERAPEUTIC APPLICATIONS.**



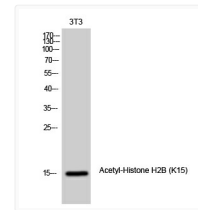
Western blot analysis of lysates from Raw264.7 cells, treated with TSA 400nM 24h, using Histone H2B (Acetyl-Lys15) Antibody. The lane on the right is blocked with the synthesized peptide.



Immunofluorescence analysis of HeLa cells, using Histone H2B (Acetyl-Lys15) Antibody. The picture on the right is blocked with the synthesized peptide.



Immunohistochemistry analysis of paraffin-embedded human breast carcinoma tissue, using Histone H2B (Acetyl-Lys15) Antibody. The picture on the right is blocked with the synthesized peptide.



Western blot analysis of 3T3 cells using Acetyl-Histone H2B (K15) Polyclonal Antibody diluted at 1: 1000. Secondary antibody was diluted at 1:20000