

## Anti-Cleaved-MPO-A49 antibody (40-120 aa) (STJ90099)

### GENERAL INFORMATION

Product Type	Primary antibodies
Applications	WB/ELISA
Host / Source	Rabbit
Reactivity	Human/Rat/Mouse

### PRODUCT PROPERTIES

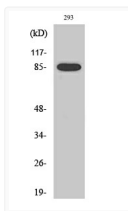
Clonality	Polyclonal
Concentration	1 mg/mL
Conjugation	Unconjugated
Purification	The antibody was affinity-purified from rabbit antiserum by affinity-chromatography using epitope-specific immunogen.
Dilution Range	WB 1:500-1:2000 ELISA 1:10000
Formulation	Liquid in PBS containing 50% Glycerol, 0.5% BSA and 0.02% Sodium Azide.
Isotype	IgG
Molecular Weight	Observed: 89kD
Storage Instruction	Store at -20°C for up to 1 year from the date of receipt, and avoid repeat freeze-thaw cycles.

### TARGET INFORMATION

Gene ID	<a href="#">4353</a>
Gene Symbol	<a href="#">MPO</a>
UniProt ID	<a href="#">PERM_HUMAN</a>
Immunogen Region	40-120 aa
Specificity	Cleaved-MPO 89k (A49) Polyclonal Antibody detects endogenous levels of fragment of activated MPO 89k protein resulting from cleavage adjacent to A49.

### ADDITIONAL INFORMATION

Note STRICTLY FOR FURTHER SCIENTIFIC RESEARCH USE ONLY (RUO). MUST NOT TO BE USED IN DIAGNOSTIC OR THERAPEUTIC APPLICATIONS.



Western blot analysis of various cells using Cleaved-MPO 89k (A49) Polyclonal Antibody