

Anti-Cleaved-ITIH2-D702 antibody (653-702 aa) (STJ90093)

GENERAL INFORMATION

Product Type	Primary antibodies
Applications	WB/ELISA
Host / Source	Rabbit
Reactivity	Human/Rat/Mouse

PRODUCT PROPERTIES

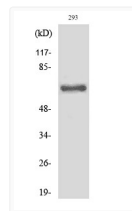
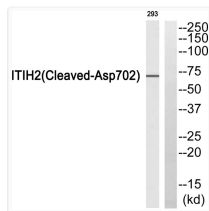
Clonality	Polyclonal
Concentration	1 mg/mL
Conjugation	Unconjugated
Purification	The antibody was affinity-purified from rabbit antiserum by affinity-chromatography using epitope-specific immunogen.
Dilution Range	WB 1:500-1:2000 ELISA 1:10000
Formulation	Liquid in PBS containing 50% Glycerol, 0.5% BSA and 0.02% Sodium Azide.
Isotype	IgG
Molecular Weight	Observed: 72kD
Storage Instruction	Store at -20°C for up to 1 year from the date of receipt, and avoid repeat freeze-thaw cycles.

TARGET INFORMATION

Gene ID	3698
Gene Symbol	ITIH2
UniProt ID	ITIH2_HUMAN
Immunogen Region	653-702 aa
Specificity	Cleaved-IT1-H2 (D702) Polyclonal Antibody detects endogenous levels of fragment of activated IT1-H2 protein resulting from cleavage adjacent to D702.

ADDITIONAL INFORMATION

Note STRICTLY FOR FURTHER SCIENTIFIC RESEARCH USE ONLY (RUO). MUST NOT TO BE USED IN DIAGNOSTIC OR THERAPEUTIC APPLICATIONS.



Western blot analysis of ITIH2 (Cleaved-Asp702) Antibody. The lane on the right is blocked with the ITIH2 (Cleaved-Asp702) peptide.

Western blot analysis of various cells using Cleaved-IT1-H2 (D702) Polyclonal Antibody