

## Anti-Cleaved-COL4A3-P1426 antibody (1407-1456 aa) (STJ90077)

### GENERAL INFORMATION

Product Type	Primary antibodies
Applications	WB/ELISA
Host / Source	Rabbit
Reactivity	Human/Monkey

### PRODUCT PROPERTIES

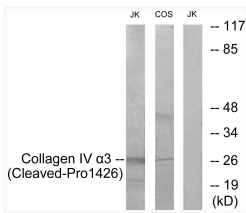
Clonality	Polyclonal
Concentration	1 mg/mL
Conjugation	Unconjugated
Purification	The antibody was affinity-purified from rabbit antiserum by affinity-chromatography using epitope-specific immunogen.
Dilution Range	WB 1:500-1:2000 ELISA 1:40000
Formulation	Liquid in PBS containing 50% Glycerol, 0.5% BSA and 0.02% Sodium Azide.
Isotype	IgG
Molecular Weight	Observed: 27kD
Storage Instruction	Store at -20°C for up to 1 year from the date of receipt, and avoid repeat freeze-thaw cycles.

### TARGET INFORMATION

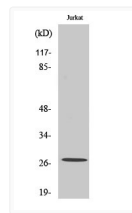
Gene ID	<a href="#">1285</a>
Gene Symbol	<a href="#">COL4A3</a>
UniProt ID	<a href="#">C04A3_HUMAN</a>
Immunogen Region	1407-1456 aa
Specificity	Cleaved-Tumstatin (P1426) Polyclonal Antibody detects endogenous levels of fragment of activated Tumstatin protein resulting from cleavage adjacent to P1426.

### ADDITIONAL INFORMATION

Note **STRICTLY FOR FURTHER SCIENTIFIC RESEARCH USE ONLY (RUO). MUST NOT TO BE USED IN DIAGNOSTIC OR THERAPEUTIC APPLICATIONS.**



Western blot analysis of lysates from Jurkat and COS7 cells, treated with etoposide 25uM 24h, using Collagen IV alpha3 (Cleaved-Pro1426) Antibody. The lane on the right is blocked with the synthesized peptide.



Western blot analysis of various cells using Cleaved-Tumstatin (P1426) Polyclonal Antibody