

Anti-Cleaved-ADAM17-R215 antibody (196-245 aa) (STJ90075)

GENERAL INFORMATION

Product Type	Primary antibodies
Applications	WB/ELISA
Host / Source	Rabbit
Reactivity	Human/Rat/Mouse

PRODUCT PROPERTIES

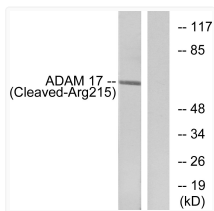
Clonality	Polyclonal
Concentration	1 mg/mL
Conjugation	Unconjugated
Purification	The antibody was affinity-purified from rabbit antiserum by affinity-chromatography using epitope-specific immunogen.
Dilution Range	WB 1:500-1:2000 ELISA 1:20000
Formulation	Liquid in PBS containing 50% Glycerol, 0.5% BSA and 0.02% Sodium Azide.
Isotype	IgG
Molecular Weight	Observed: 65kD
Storage Instruction	Store at -20°C for up to 1 year from the date of receipt, and avoid repeat freeze-thaw cycles.

TARGET INFORMATION

Gene ID	6868
Gene Symbol	ADAM17
UniProt ID	ADA17_HUMAN
Immunogen Region	196-245 aa
Specificity	Cleaved-TACE (R215) Polyclonal Antibody detects endogenous levels of fragment of activated TACE protein resulting from cleavage adjacent to R215.

ADDITIONAL INFORMATION

Note STRICTLY FOR FURTHER SCIENTIFIC RESEARCH USE ONLY (RUO). MUST NOT TO BE USED IN DIAGNOSTIC OR THERAPEUTIC APPLICATIONS.



Western blot analysis of lysates from rat liver cells, using ADAM 17 (Cleaved-Arg215) Antibody. The lane on the right is blocked with the synthesized peptide.