

Anti-Cleaved-SPTAN1-D1185 antibody (1136-1185 aa) (STJ90073)

GENERAL INFORMATION

Product Type	Primary antibodies
Applications	WB/ELISA
Host / Source	Rabbit
Reactivity	Human/Rat/Mouse

PRODUCT PROPERTIES

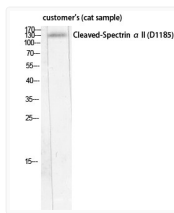
Clonality	Polyclonal
Concentration	1 mg/mL
Conjugation	Unconjugated
Purification	The antibody was affinity-purified from rabbit antiserum by affinity-chromatography using epitope-specific immunogen.
Dilution Range	WB 1:500-1:2000 ELISA 1:10000
Formulation	Liquid in PBS containing 50% Glycerol, 0.5% BSA and 0.02% Sodium Azide.
Isotype	IgG
Molecular Weight	Observed: 137kD
Storage Instruction	Store at -20°C for up to 1 year from the date of receipt, and avoid repeat freeze-thaw cycles.

TARGET INFORMATION

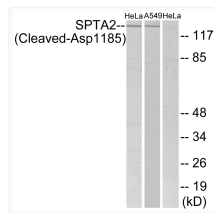
Gene ID	6709
Gene Symbol	SPTAN1
UniProt ID	SPTN1_HUMAN
Immunogen Region	1136-1185 aa
Specificity	Cleaved-Spectrin Alpha II (D1185) Polyclonal Antibody detects endogenous levels of fragment of activated Spectrin Alpha II protein resulting from cleavage adjacent to D1185.

ADDITIONAL INFORMATION

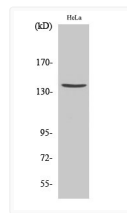
Note **STRICTLY FOR FURTHER SCIENTIFIC RESEARCH USE ONLY (RUO). MUST NOT TO BE USED IN DIAGNOSTIC OR THERAPEUTIC APPLICATIONS.**



Western blot analysis of customer's (cat sample) using Cleaved-Spectrin Alpha II (D1185) Polyclonal Antibody diluted at 1: 500



Western blot analysis of lysates from HeLa and A549 cells, treated with etoposide 25uM 24H, using SPTA2 (Cleaved-Asp1185) Antibody. The lane on the right is blocked with the synthesized peptide.



Western blot analysis of various cells using Cleaved-Spectrin Alpha II (D1185) Polyclonal Antibody diluted at 1: 500