

Anti-Cleaved-NOTCH1-V1754 antibody (1735-1784 aa) (STJ90066)

GENERAL INFORMATION

Product Type	Primary antibodies
Applications	WB/IF/IHC/ELISA
Host / Source	Rabbit
Reactivity	Human/Mouse/Rat

PRODUCT PROPERTIES

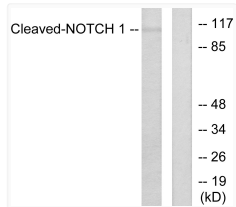
Clonality	Polyclonal
Concentration	1 mg/mL
Conjugation	Unconjugated
Purification	The antibody was affinity-purified from rabbit antiserum by affinity-chromatography using epitope-specific immunogen.
Dilution Range	WB 1:500-2000 IHC-P 1:50-300 IF 1:50-300
Formulation	Liquid in PBS containing 50% Glycerol, 0.5% BSA and 0.02% Sodium Azide.
Isotype	IgG
Molecular Weight	Observed: 110kD
Storage Instruction	Store at -20°C for up to 1 year from the date of receipt, and avoid repeat freeze-thaw cycles.

TARGET INFORMATION

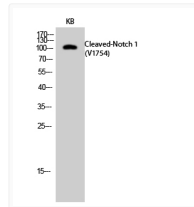
Gene ID	4851
Gene Symbol	NOTCH1
UniProt ID	NOTC1_HUMAN
Immunogen Region	1735-1784 aa
Specificity	Cleaved-Notch 1 (V1754) Polyclonal Antibody detects endogenous levels of fragment of activated Notch 1 protein resulting from cleavage adjacent to V1754.

ADDITIONAL INFORMATION

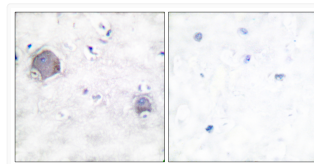
Note STRICTLY FOR FURTHER SCIENTIFIC RESEARCH USE ONLY (RUO). MUST NOT TO BE USED IN DIAGNOSTIC OR THERAPEUTIC APPLICATIONS.



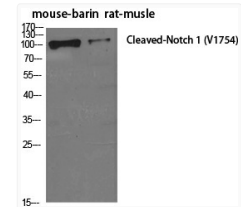
Western blot analysis of lysates from NIH/3T3 cells, treated with Etoposide 25uM 60', using Notch 1 (Cleaved-Val1754) Antibody. The lane on the right is blocked with the synthesized peptide.



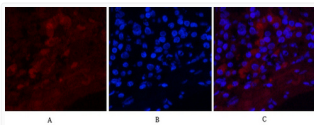
Western blot analysis of KB cells using Cleaved-Notch 1 (V1754) Polyclonal Antibody diluted at 1: 500



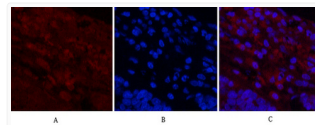
Immunohistochemistry analysis of paraffin-embedded human brain tissue, using Notch 1 (Cleaved-Val1754) Antibody. The picture on the right is blocked with the synthesized peptide.



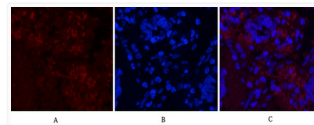
Western blot analysis of various cells using Cleaved-Notch 1 (V1754) Polyclonal Antibody diluted at 1: 500



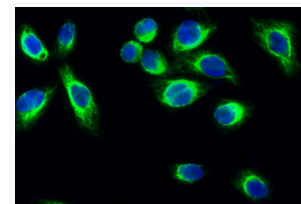
Immunofluorescence analysis of Human-lung-cancer tissue. 1, Cleaved-Notch 1 (V1754) Polyclonal Antibody (red) was diluted at 1:200 (4°C, overnight). 2, Cy3 labeled Secondary antibody was diluted at 1:300 (room temperature, 50min). 3, Picture B: DAPI (blue) 10min. Picture A:Target. Picture B: DAPI. Picture C: merge of A+B



Immunofluorescence analysis of Human-lung-cancer tissue. 1, Cleaved-Notch 1 (V1754) Polyclonal Antibody (red) was diluted at 1:200 (4°C, overnight). 2, Cy3 labeled Secondary antibody was diluted at 1:300 (room temperature, 50min). 3, Picture B: DAPI (blue) 10min. Picture A:Target. Picture B: DAPI. Picture C: merge of A+B



Immunofluorescence analysis of Human-lung-cancer tissue. 1, Cleaved-Notch 1 (V1754) Polyclonal Antibody (red) was diluted at 1:200 (4°C, overnight). 2, Cy3 labeled Secondary antibody was diluted at 1:300 (room temperature, 50min). 3, Picture B: DAPI (blue) 10min. Picture A:Target. Picture B: DAPI. Picture C: merge of A+B



Immunofluorescence analysis of HeLa cell. 1, Cleaved-Notch 1 (V1754) Polyclonal Antibody (green) was diluted at 1:200 (4°C overnight), 2, Goat Anti Rabbit Alexa Fluor 488 Catalog: (NA) was diluted at 1:1000 (room temperature, 50min). 3 DAPI (blue) 10min.