

## Anti-Cleaved-MMP10-F99 antibody (80-129 aa) (STJ90058)

### GENERAL INFORMATION

Product Type	Primary antibodies
Applications	WB/ELISA
Host / Source	Rabbit
Reactivity	Human/Rat/Mouse

### PRODUCT PROPERTIES

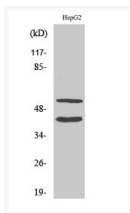
Clonality	Polyclonal
Concentration	1 mg/mL
Conjugation	Unconjugated
Purification	The antibody was affinity-purified from rabbit antiserum by affinity-chromatography using epitope-specific immunogen.
Dilution Range	WB 1:500-1:2000 ELISA 1:40000
Formulation	Liquid in PBS containing 50% Glycerol, 0.5% BSA and 0.02% Sodium Azide.
Isotype	IgG
Molecular Weight	Observed: 43kD
Storage Instruction	Store at -20°C for up to 1 year from the date of receipt, and avoid repeat freeze-thaw cycles.

### TARGET INFORMATION

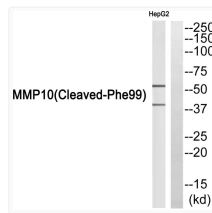
Gene ID	<a href="#">4319</a>
Gene Symbol	<a href="#">MMP10</a>
UniProt ID	<a href="#">MMP10_HUMAN</a>
Immunogen Region	80-129 aa
Specificity	Cleaved-MMP-10 (F99) Polyclonal Antibody detects endogenous levels of fragment of activated MMP-10 protein resulting from cleavage adjacent to F99.

### ADDITIONAL INFORMATION

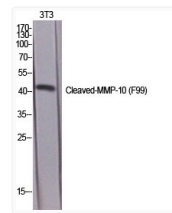
Note STRICTLY FOR FURTHER SCIENTIFIC RESEARCH USE ONLY (RUO). MUST NOT TO BE USED IN DIAGNOSTIC OR THERAPEUTIC APPLICATIONS.



Western blot analysis of HepG2 cells using Cleaved-MMP-10 (F99) Polyclonal Antibody diluted at 1:1000



Western blot analysis of MMP10 (Cleaved-Phe99) Antibody. The lane on the right is blocked with the MMP10 (Cleaved-Phe99) peptide.



Western blot analysis of various cells using Cleaved-MMP-10 (F99) Polyclonal Antibody diluted at 1:1000