

Anti-Cleaved-COL4A3-L1425 antibody (1376-1425 aa) (STJ90050)

GENERAL INFORMATION

Product Type	Primary antibodies
Applications	WB/ELISA
Host / Source	Rabbit
Reactivity	Human/Rat/Mouse

PRODUCT PROPERTIES

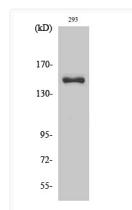
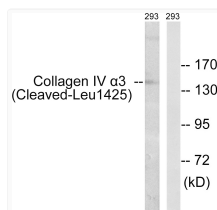
Clonality	Polyclonal
Concentration	1 mg/mL
Conjugation	Unconjugated
Purification	The antibody was affinity-purified from rabbit antiserum by affinity-chromatography using epitope-specific immunogen.
Dilution Range	WB 1:500-1:2000 ELISA 1:5000
Formulation	Liquid in PBS containing 50% Glycerol, 0.5% BSA and 0.02% Sodium Azide.
Isotype	IgG
Molecular Weight	Observed: 140kD
Storage Instruction	Store at -20°C for up to 1 year from the date of receipt, and avoid repeat freeze-thaw cycles.

TARGET INFORMATION

Gene ID	1285
Gene Symbol	COL4A3
UniProt ID	C04A3_HUMAN
Immunogen Region	1376-1425 aa
Specificity	Cleaved-COL4A3 (L1425) Polyclonal Antibody detects endogenous levels of fragment of activated COL4A3 protein resulting from cleavage adjacent to L1425.

ADDITIONAL INFORMATION

Note STRICTLY FOR FURTHER SCIENTIFIC RESEARCH USE ONLY (RUO). MUST NOT TO BE USED IN DIAGNOSTIC OR THERAPEUTIC APPLICATIONS.



Western blot analysis of lysates from 293 cells, treated with etoposide 25uM 1h, using Collagen IV alpha3 (Cleaved-Leu1425) Antibody. The lane on the right is blocked with the synthesized peptide.

Western blot analysis of various cells using Cleaved-COL4A3 (L1425) Polyclonal Antibody.