

## Anti-Cleaved-CTSD-G65 antibody (46-95 aa) (STJ90037)

### GENERAL INFORMATION

Product Type	Primary antibodies
Applications	WB/ELISA
Host / Source	Rabbit
Reactivity	Human/Monkey

### PRODUCT PROPERTIES

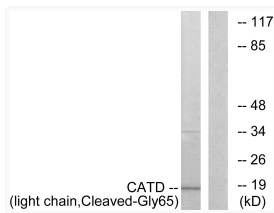
Clonality	Polyclonal
Concentration	1 mg/mL
Conjugation	Unconjugated
Purification	The antibody was affinity-purified from rabbit antiserum by affinity-chromatography using epitope-specific immunogen.
Dilution Range	WB 1:500-1:2000 ELISA 1:20000
Formulation	Liquid in PBS containing 50% Glycerol, 0.5% BSA and 0.02% Sodium Azide.
Isotype	IgG
Molecular Weight	Observed: 17kD
Storage Instruction	Store at -20°C for up to 1 year from the date of receipt, and avoid repeat freeze-thaw cycles.

### TARGET INFORMATION

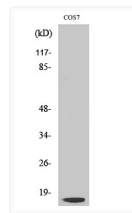
Gene ID	<a href="#">1509</a>
Gene Symbol	<a href="#">CTSD</a>
UniProt ID	<a href="#">CATD_HUMAN</a>
Immunogen Region	46-95 aa
Specificity	Cleaved-Cathepsin D LC (G65) Polyclonal Antibody detects endogenous levels of fragment of activated Cathepsin D LC protein resulting from cleavage adjacent to G65.

### ADDITIONAL INFORMATION

Note STRICTLY FOR FURTHER SCIENTIFIC RESEARCH USE ONLY (RUO). MUST NOT TO BE USED IN DIAGNOSTIC OR THERAPEUTIC APPLICATIONS.



Western blot analysis of lysates from COS7 cells, treated with etoposide 25uM 1h, using CATD (light chain, Cleaved-Gly65) Antibody. The lane on the right is blocked with the synthesized peptide.



Western blot analysis of various cells using Cleaved-Cathepsin D LC (G65) Polyclonal Antibody