

Anti-Cleaved-CTSC-R394 antibody (345-394 aa) (STJ90034)

GENERAL INFORMATION

Product Type	Primary antibodies
Applications	WB/ELISA
Host / Source	Rabbit
Reactivity	Human/Rat/Mouse

PRODUCT PROPERTIES

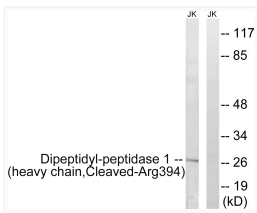
Clonality	Polyclonal
Concentration	1 mg/mL
Conjugation	Unconjugated
Purification	The antibody was affinity-purified from rabbit antiserum by affinity-chromatography using epitope-specific immunogen.
Dilution Range	WB 1:500-1:2000 ELISA 1:20000
Formulation	Liquid in PBS containing 50% Glycerol, 0.5% BSA and 0.02% Sodium Azide.
Isotype	IgG
Molecular Weight	Observed: 27kD
Storage Instruction	Store at -20°C for up to 1 year from the date of receipt, and avoid repeat freeze-thaw cycles.

TARGET INFORMATION

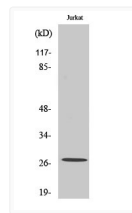
Gene ID	1075
Gene Symbol	CTSC
UniProt ID	CATC_HUMAN
Immunogen Region	345-394 aa
Specificity	Cleaved-Cathepsin C HC (R394) Polyclonal Antibody detects endogenous levels of fragment of activated Cathepsin C HC protein resulting from cleavage adjacent to R394.

ADDITIONAL INFORMATION

Note **STRICTLY FOR FURTHER SCIENTIFIC RESEARCH USE ONLY (RUO). MUST NOT TO BE USED IN DIAGNOSTIC OR THERAPEUTIC APPLICATIONS.**



Western blot analysis of lysates from Jurkat cells, treated with etoposide 25uM 1h, using Dipeptidyl-peptidase 1 (heavy chain, Cleaved-Arg394) Antibody. The lane on the right is blocked with the synthesized peptide.



Western blot analysis of various cells using Cleaved-Cathepsin C HC (R394) Polyclonal Antibody.