

Anti-Cleaved-CASP2-G170 antibody (151-200 aa) (STJ90023)

GENERAL INFORMATION

Product Type	Primary antibodies
Applications	WB/ELISA
Host / Source	Rabbit
Reactivity	Human/Mouse/Rat

PRODUCT PROPERTIES

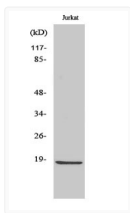
Clonality	Polyclonal
Concentration	1 mg/mL
Conjugation	Unconjugated
Purification	The antibody was affinity-purified from rabbit antiserum by affinity-chromatography using epitope-specific immunogen.
Dilution Range	WB 1:500-1:2000 ELISA 1:40000
Formulation	Liquid in PBS containing 50% Glycerol, 0.5% BSA and 0.02% Sodium Azide.
Isotype	IgG
Molecular Weight	Observed: 18kD or 35kD
Storage Instruction	Store at -20°C for up to 1 year from the date of receipt, and avoid repeat freeze-thaw cycles.

TARGET INFORMATION

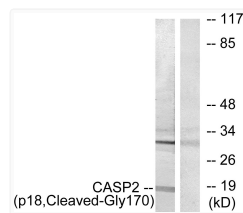
Gene ID	835
Gene Symbol	CASP2
UniProt ID	CASP2_HUMAN
Immunogen Region	151-200 aa
Specificity	Cleaved-Caspase-2 p18 (G170) Polyclonal Antibody detects endogenous levels of fragment of activated Caspase-2 p18 protein resulting from cleavage adjacent to G170.

ADDITIONAL INFORMATION

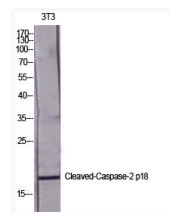
Note **STRICTLY FOR FURTHER SCIENTIFIC RESEARCH USE ONLY (RUO). MUST NOT TO BE USED IN DIAGNOSTIC OR THERAPEUTIC APPLICATIONS.**



Western blot analysis of Jurkat cells using Cleaved-Caspase-2 p18 (G170) Polyclonal Antibody diluted at 1:2000



Western blot analysis of lysates from Jurkat cells, treated with etoposide 25uM 24h, using Caspase 2 (p18, Cleaved-Gly170) Antibody. The lane on the right is blocked with the synthesized peptide.



Western blot analysis of various cells using Cleaved-Caspase-2 p18 (G170) Polyclonal Antibody diluted at 1:2000