

## Anti-Cleaved-C1R-R463 antibody (414-463 aa) (STJ90017)

### GENERAL INFORMATION

Product Type	Primary antibodies
Applications	WB/ELISA
Host / Source	Rabbit
Reactivity	Human/Rat/Mouse

### PRODUCT PROPERTIES

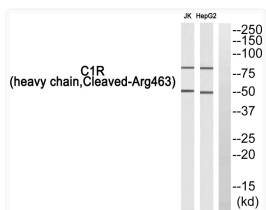
Clonality	Polyclonal
Concentration	1 mg/mL
Conjugation	Unconjugated
Purification	The antibody was affinity-purified from rabbit antiserum by affinity-chromatography using epitope-specific immunogen.
Dilution Range	WB 1:500-1:2000 ELISA 1:10000
Formulation	Liquid in PBS containing 50% Glycerol, 0.5% BSA and 0.02% Sodium Azide.
Isotype	IgG
Molecular Weight	Observed: 51kD
Storage Instruction	Store at -20°C for up to 1 year from the date of receipt, and avoid repeat freeze-thaw cycles.

### TARGET INFORMATION

Gene ID	<a href="#">715</a>
Gene Symbol	<a href="#">C1R</a>
UniProt ID	<a href="#">C1R_HUMAN</a>
Immunogen Region	414-463 aa
Specificity	Cleaved-C1r HC (R463) Polyclonal Antibody detects endogenous levels of fragment of activated C1r HC protein resulting from cleavage adjacent to R463.

### ADDITIONAL INFORMATION

Note STRICTLY FOR FURTHER SCIENTIFIC RESEARCH USE ONLY (RUO). MUST NOT TO BE USED IN DIAGNOSTIC OR THERAPEUTIC APPLICATIONS.



Western blot analysis of C1R (heavy chain, Cleaved-Arg463) Antibody. The lane on the right is blocked with the C1R (heavy chain, Cleaved-Arg463) peptide.