

## Anti-Cleaved-CASP9-D330 antibody (281-330 aa) (STJ90012)

### GENERAL INFORMATION

Product Type	Primary antibodies
Applications	IF/WB/IHC/ELISA
Host / Source	Rabbit
Reactivity	Human/Rat/Mouse

### PRODUCT PROPERTIES

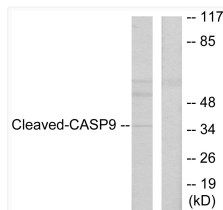
Clonality	Polyclonal
Concentration	1 mg/mL
Conjugation	Unconjugated
Purification	The antibody was affinity-purified from rabbit antiserum by affinity-chromatography using epitope-specific immunogen.
Dilution Range	IF 1:50-200 WB 1:500-1:2000 IHC 1:100-1:300 ELISA 1:20000
Formulation	Liquid in PBS containing 50% Glycerol, 0.5% BSA and 0.02% Sodium Azide.
Isotype	IgG
Molecular Weight	Observed: 10kD, 46kD
Storage Instruction	Store at -20°C for up to 1 year from the date of receipt, and avoid repeat freeze-thaw cycles.

### TARGET INFORMATION

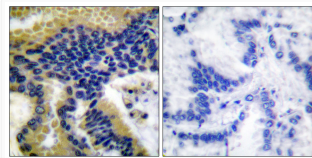
Gene ID	<a href="#">842</a>
Gene Symbol	<a href="#">CASP9</a>
UniProt ID	<a href="#">CASP9_HUMAN</a>
Immunogen Region	281-330 aa
Specificity	Cleaved-Caspase-9 p10 (D330) Polyclonal Antibody detects endogenous levels of fragment of activated Caspase-9 p10 protein resulting from cleavage adjacent to D330.

### ADDITIONAL INFORMATION

Note **STRICTLY FOR FURTHER SCIENTIFIC RESEARCH USE ONLY (RUO). MUST NOT TO BE USED IN DIAGNOSTIC OR THERAPEUTIC APPLICATIONS.**



Western blot analysis of lysates from HeLa cells, treated with Etoposide 25uM 60', using Caspase 9 (Cleaved-Asp330) Antibody. The lane on the right is blocked with the synthesized peptide.



Immunohistochemistry analysis of paraffin-embedded human lung carcinoma tissue, using Caspase 9 (Cleaved-Asp330) Antibody. The picture on the right is blocked with the synthesized peptide.