

## Anti-ACE2 antibody (N-Term) (STJ73762)

### GENERAL INFORMATION

Product Type	Primary antibodies
Applications	Pep-ELISA/WB/IHC/FC
Host / Source	Goat
Reactivity	Human

### PRODUCT PROPERTIES

Clonality	Polyclonal
Concentration	0.5 mg/mL
Conjugation	Unconjugated
Purification	Purified from goat serum by ammonium sulphate precipitation followed by antigen affinity chromatography using the immunizing peptide.
Dilution Range	Peptide ELISA: antibody detection limit dilution 1:128000. WB: Approx 90-100kDa band observed in lysates of cell line HepG2 (calculated MW of 92.4kDa according to NP_001358344.1). Recommended concentration 0.5-2ug/ml. Primary incubation 1 hour at
Formulation	0.5 mg/ml in Tris saline, 0.02% sodium azide, pH7.3 with 0.5% bovine serum albumin. NA
Isotype	IgG
Storage Instruction	Store at -20°C on receipt and minimise freeze-thaw cycles.

### TARGET INFORMATION

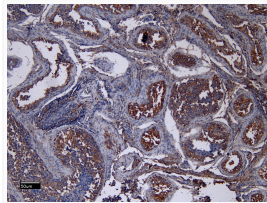
Gene ID	<a href="#">59272</a>
Gene Symbol	<a href="#">ACE2</a>
UniProt ID	<a href="#">ACE2_HUMAN</a>
Immunogen Region	N-Term
Immunogen Sequence	PROPRIETARY

### ADDITIONAL INFORMATION

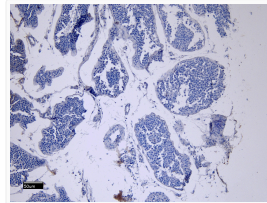
Note **STRICTLY FOR FURTHER SCIENTIFIC RESEARCH USE ONLY (RUO). MUST NOT TO BE USED IN DIAGNOSTIC OR THERAPEUTIC APPLICATIONS.**



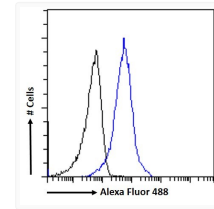
STJ73762 (1.5 µg/ml) staining of HepG2 cell lysate (35 µg protein in RIPA buffer). Detected by chemiluminescence.



STJ73762 (8 µg/ml) staining of paraffin embedded Human Testis. Heat induced antigen retrieval with citrate buffer pH 6, HRP-staining.



STJ73762 Negative Control showing staining of paraffin embedded Human Testis, with no primary antibody.



STJ73762 Flow cytometric analysis of paraformaldehyde fixed HepG2 cells (blue line), permeabilized with 0.5% Triton. Primary incubation 1hr (10 µg/ml) followed by Alexa Fluor 488 secondary antibody (1 µg/ml). NA NA NA IgG control: Unimmunized goat IgG (black line) followed by Alexa Fluor 488 secondary antibody.