

Anti-ACE2 antibody (C-Term) (STJ73761)

GENERAL INFORMATION

Product Type	Primary antibodies
Applications	Pep-ELISA/WB/IHC
Host / Source	Goat
Reactivity	Human

PRODUCT PROPERTIES

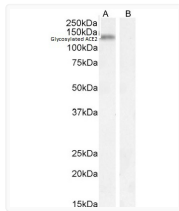
Clonality	Polyclonal
Concentration	0.5 mg/mL
Conjugation	Unconjugated
Purification	Purified from goat serum by ammonium sulphate precipitation followed by antigen affinity chromatography using the immunizing peptide.
Dilution Range	Peptide ELISA: antibody detection limit dilution 1:8000. WB: Approx 140kDa band observed in Human Kidney lysates (calculated MW of 92.4kDa according to NP_001358344.1). The observed molecular weight was successfully blocked by incubation with the
Formulation	0.5 mg/ml in Tris saline, 0.02% sodium azide, pH7.3 with 0.5% bovine serum albumin. NA
Isotype	IgG
Storage Instruction	Store at -20°C on receipt and minimise freeze-thaw cycles.

TARGET INFORMATION

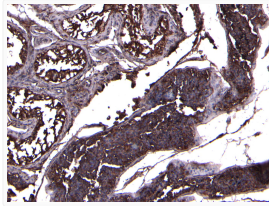
Gene ID	59272
Gene Symbol	ACE2
UniProt ID	ACE2_HUMAN
Immunogen Region	C-Term
Immunogen Sequence	PROPRIETARY.

ADDITIONAL INFORMATION

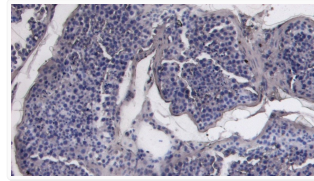
Note STRICTLY FOR FURTHER SCIENTIFIC RESEARCH USE ONLY (RUO). MUST NOT TO BE USED IN DIAGNOSTIC OR THERAPEUTIC APPLICATIONS.



STJ73761 (0.5 µg/ml) staining of Human Kidney lysate (A) + Peptide (B) (35 µg protein in RIPA buffer). Detected by chemiluminescence.



STJ73761 (8 µg/ml) staining of paraffin embedded Human Testis. Heat induced antigen retrieval with citrate buffer pH 6, HRP-staining.



STJ73761 Negative Control showing staining of paraffin embedded Human Testis, with no primary antibody.