

## Anti-ACE2 antibody (N-Term) (STJ73760)

### GENERAL INFORMATION

Product Type	Primary antibodies
Applications	Pep-ELISA/IHC
Host / Source	Goat
Reactivity	Human

### PRODUCT PROPERTIES

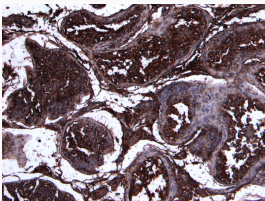
Clonality	Polyclonal
Concentration	0.5 mg/mL
Conjugation	Unconjugated
Purification	Purified from goat serum by ammonium sulphate precipitation followed by antigen affinity chromatography using the immunizing peptide.
Dilution Range	Peptide ELISA: antibody detection limit dilution 1:32000. IHC: Paraffin embedded Human Testis. Recommended concentration: 8µg/ml. A customer reported weak staining on paraffin embedded Human Kidney, at a concentration of 5ug/ml.
Formulation	0.5 mg/ml in Tris saline, 0.02% sodium azide, pH7.3 with 0.5% bovine serum albumin. NA
Isotype	IgG
Storage Instruction	Store at -20°C on receipt and minimise freeze-thaw cycles.

### TARGET INFORMATION

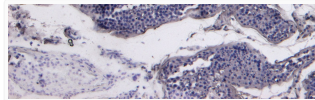
Gene ID	<a href="#">59272</a>
Gene Symbol	<a href="#">ACE2</a>
UniProt ID	<a href="#">ACE2_HUMAN</a>
Immunogen Region	N-Term
Immunogen Sequence	PROPRIETARY

### ADDITIONAL INFORMATION

Note STRICTLY FOR FURTHER SCIENTIFIC RESEARCH USE ONLY (RUO). MUST NOT TO BE USED IN DIAGNOSTIC OR THERAPEUTIC APPLICATIONS.



STJ73760 (8µg/ml) staining of paraffin embedded Human Testis. Heat induced antigen retrieval with citrate buffer pH 6, HRP-staining.



STJ73760 Negative Control showing staining of paraffin embedded Human Testis, with no primary antibody.