

## Anti-VEGFA antibody (387-399) (STJ73755)

### GENERAL INFORMATION

Product Type	Primary antibodies
Applications	Pep-ELISA/WB
Host / Source	Goat
Reactivity	Human/Mouse/Rat/Cat/Dog/Pig/Cow

### PRODUCT PROPERTIES

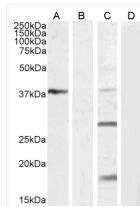
Clonality	Polyclonal
Concentration	0.5 mg/mL
Conjugation	Unconjugated
Purification	Purified from goat serum by ammonium sulphate precipitation followed by antigen affinity chromatography using the immunizing peptide.
Dilution Range	Peptide ELISA: antibody detection limit dilution 1:128000. WB: Approx 38kDa band observed in Mouse Liver lysates, 38+28+18kDa in Human Kidney lysates and approx 18kDa in lysates of cell line K562 (calculated MW of 40.3kDa according to Mouse NP_03
Formulation	0.5 mg/ml in Tris saline, 0.02% sodium azide, pH7.3 with 0.5% bovine serum albumin. NA
Isotype	IgG
Storage Instruction	Store at -20°C on receipt and minimise freeze-thaw cycles.

### TARGET INFORMATION

Gene ID	<a href="#">7422</a>
Gene Symbol	<a href="#">VEGFA</a>
UniProt ID	<a href="#">VEGFA_HUMAN</a>
Immunogen Region	387-399
Immunogen Sequence	KNTDSRCKARQLE
Specificity	This antibody is expected to recognize following isoforms: a (45.5kDa) , b (43.6kDa) , c (42.8kDa) , d (40.7kDa) , g (40.6kDa) , i (27.0kDa) , j (25.2kDa) , k (24.4kDa) , o (22.3kDa) and s (18.9kDa)

### ADDITIONAL INFORMATION

Note STRICTLY FOR FURTHER SCIENTIFIC RESEARCH USE ONLY (RUO). MUST NOT TO BE USED IN DIAGNOSTIC OR THERAPEUTIC APPLICATIONS.



STJ73755 (1µg/ml) staining of Mouse Liver lysate (A) + Peptide (B) , Human Kidney lysate (C) + Peptide (D) (35µg protein in RIPA buffer) Detected by chemiluminescence.



STJ73755 (1µg/ml) staining of K562 cell lysate (A) + Peptide (B) (35µg protein in RIPA buffer). Detected by chemiluminescence.