

## Anti-SCRIB/Scribble antibody (Internal) (STJ73751)

### GENERAL INFORMATION

Product Type	Primary antibodies
Applications	Pep-ELISA/WB/IF
Host / Source	Goat
Reactivity	Human

### PRODUCT PROPERTIES

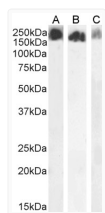
Clonality	Polyclonal
Concentration	0.5 mg/mL
Conjugation	Unconjugated
Purification	Purified from goat serum by ammonium sulphate precipitation followed by antigen affinity chromatography using the immunizing peptide.
Dilution Range	Peptide ELISA: antibody detection limit dilution 1:1000. WB: Approx 200-250kDa band observed in lysates of cell lines HeLa, HepG2 and U2OS (calculated MW of 178kDa according to NP_874365.3). This molecular weight is routinely observed by other so
Formulation	0.5 mg/ml in Tris saline, 0.02% sodium azide, pH7.3 with 0.5% bovine serum albumin. NA
Isotype	IgG
Storage Instruction	Store at -20°C on receipt and minimise freeze-thaw cycles.

### TARGET INFORMATION

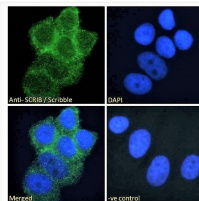
Gene ID	<a href="#">23513</a>
Gene Symbol	<a href="#">SCRIB</a>
UniProt ID	<a href="#">SCRIB_HUMAN</a>
Immunogen Region	Internal
Immunogen Sequence	PEGPGKEKELPGQ
Specificity	This antibody is expected to recognize both reported isoforms (NP_874365.3; NP_056171.3).

### ADDITIONAL INFORMATION

Note STRICTLY FOR FURTHER SCIENTIFIC RESEARCH USE ONLY (RUO). MUST NOT TO BE USED IN DIAGNOSTIC OR THERAPEUTIC APPLICATIONS.



STJ73751 (2µg/ml) staining of HeLa (A), HepG2 (B) and U2OS (C) cell lysate (35µg protein in RIPA buffer). Detected by chemiluminescence.



STJ73751 Immunofluorescence analysis of paraformaldehyde fixed MCF7 cells, permeabilized with 0.15% Triton. Primary incubation 1hr (10µg/ml) followed by Alexa Fluor 488 secondary antibody (2µg/ml), showing cell junction staining. The nuclear stain is DAPI (blue). Negative control: Unimmunized goat IgG (10µg/ml) followed by Alexa Fluor 488 secondary antibody (2µg/ml).