

Anti-NOTCH1 antibody (171-182) (STJ73723)

GENERAL INFORMATION

| | |
|---------------|-------------------------|
| Product Type | Primary antibodies |
| Applications | Pep-ELISA/IF/IHC |
| Host / Source | Goat |
| Reactivity | Human/Mouse/Rat/Dog/Cow |

PRODUCT PROPERTIES

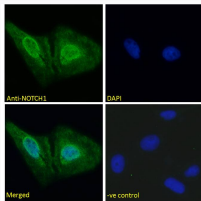
| | |
|---------------------|---|
| Clonality | Polyclonal |
| Concentration | 0.5 mg/mL |
| Conjugation | Unconjugated |
| Purification | Purified from goat serum by ammonium sulphate precipitation followed by antigen affinity chromatography using the immunizing peptide. |
| Dilution Range | Peptide ELISA: antibody detection limit dilution 1:8000. IHC: Paraffin embedded Human Thyroid. Recommended concentration: 5µg/ml. Immunofluorescence: Strong expression of the protein seen in the nucleus of U2OS cells. Recomm |
| Formulation | 0.5 mg/ml in Tris saline, 0.02% sodium azide, pH7.3 with 0.5% bovine serum albumin. NA |
| Isotype | IgG |
| Storage Instruction | Store at -20°C on receipt and minimise freeze-thaw cycles. |

TARGET INFORMATION

| | |
|--------------------|-----------------------------|
| Gene ID | 4851 |
| Gene Symbol | NOTCH1 |
| UniProt ID | NOTC1_HUMAN |
| Immunogen Region | 171-182 |
| Immunogen Sequence | HGPTCRQDVNEC |

ADDITIONAL INFORMATION

Note STRICTLY FOR FURTHER SCIENTIFIC RESEARCH USE ONLY (RUO). MUST NOT TO BE USED IN DIAGNOSTIC OR THERAPEUTIC APPLICATIONS.



STJ73723 Immunofluorescence analysis of paraformaldehyde fixed U2OS cells, permeabilized with 0.15% Triton. Primary incubation 1hr (5µg/ml) followed by Alexa Fluor 488 secondary antibody (2µg/ml), showing nuclear staining. The nuclear stain is DAPI (blue). Negative control: Unimmunized goat IgG (5µg/ml) followed by Alexa Fluor 488 secondary antibody (2µg/ml).