

Anti-Doublecortex/DCX antibody (Internal) (STJ73591)

GENERAL INFORMATION

Product Type	Primary antibodies
Applications	Pep-ELISA/WB/IHC/IF
Host / Source	Goat
Reactivity	Human/Mouse/Rat/Dog/Cat

PRODUCT PROPERTIES

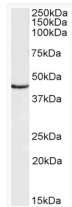
Clonality	Polyclonal
Concentration	0.5 mg/mL
Conjugation	Unconjugated
Purification	Purified from goat serum by ammonium sulphate precipitation followed by antigen affinity chromatography using the immunizing peptide.
Dilution Range	Peptide ELISA: antibody detection limit dilution 1:128000. WB: Approx 45kDa band observed in Mouse fetal Brain lysates (calculated MW of 40.6kDa according to Mouse NP_001103692.1). Recommended concentration: 0.003-0.01µg/ml. Primary incubation 1
Formulation	0.5 mg/ml in Tris saline, 0.02% sodium azide, pH7.3 with 0.5% bovine serum albumin. NA
Isotype	IgG
Storage Instruction	Store at -20°C on receipt and minimise freeze-thaw cycles.

TARGET INFORMATION

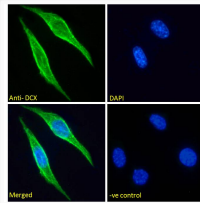
Gene ID	1641
Gene Symbol	DCX
UniProt ID	DCX_HUMAN
Immunogen Region	Internal
Immunogen Sequence	KASPTPQKTSKSPG
Specificity	This antibody is expected to recognise isoform a (NP_000546.2) , isoform b (NP_835365.1) , and isoform c (NP_835364.1 and NP_835366.1).

ADDITIONAL INFORMATION

Note STRICTLY FOR FURTHER SCIENTIFIC RESEARCH USE ONLY (RUO). MUST NOT TO BE USED IN DIAGNOSTIC OR THERAPEUTIC APPLICATIONS.



STJ73591 (0.003µg/ml) staining of Mouse fetal Brain lysate (35µg protein in RIPA buffer). Detected by chemiluminescence.



STJ73591 Immunofluorescence analysis of paraformaldehyde fixed NIH3T3 cells, permeabilized with 0.15% Triton. Primary incubation 1hr (5ug/ml) followed by Alexa Fluor 488 secondary antibody (2ug/ml) , showing cytoplasmic staining. The nuclear stain is DAPI (blue). Negative control: Unimmunized goat IgG (5ug/ml) followed by Alexa Fluor 488 secondary antibody (2ug/ml).