

Anti-JIP1/MAPK8IP1 antibody (Internal) (STJ73583)

GENERAL INFORMATION

Product Type	Primary antibodies
Applications	Pep-ELISA/WB
Host / Source	Goat
Reactivity	Human/Dog/Pig/Cow

PRODUCT PROPERTIES

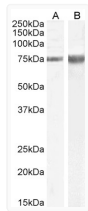
Clonality	Polyclonal
Concentration	0.5 mg/mL
Conjugation	Unconjugated
Purification	Purified from goat serum by ammonium sulphate precipitation followed by antigen affinity chromatography using the immunizing peptide.
Dilution Range	Peptide ELISA: antibody detection limit dilution 1:2000. WB: Approx 75kDa band observed in Human Amygdala and Cerebellum Brain lysates (calculated MW of 77.5kDa according to NP_005447.1). Recommended concentration:0.3-1µg/ml. Primary incubation
Formulation	0.5 mg/ml in Tris saline, 0.02% sodium azide, pH7.3 with 0.5% bovine serum albumin. NA
Isotype	IgG
Storage Instruction	Store at -20°C on receipt and minimise freeze-thaw cycles.

TARGET INFORMATION

Gene ID	9479
Gene Symbol	MAPK8IP1
UniProt ID	JIP1_HUMAN
Immunogen Region	Internal
Immunogen Sequence	DSQEAKGNKCSH

ADDITIONAL INFORMATION

Note STRICTLY FOR FURTHER SCIENTIFIC RESEARCH USE ONLY (RUO). MUST NOT TO BE USED IN DIAGNOSTIC OR THERAPEUTIC APPLICATIONS.



STJ73583 (1µg/ml) staining of Human Amygdala (A) and Cerebellum (B) lysate (35µg protein in RIPA buffer). Detected by chemiluminescence.