

Anti-prepro-transforming growth factor beta-2 antibody (Internal) (STJ73581)

GENERAL INFORMATION

| | |
|---------------|--------------------|
| Product Type | Primary antibodies |
| Applications | Pep-ELISA/WB |
| Host / Source | Goat |
| Reactivity | Human/Dog/Pig/Cow |

PRODUCT PROPERTIES

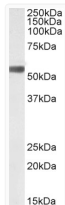
| | |
|---------------------|---|
| Clonality | Polyclonal |
| Concentration | 0.5 mg/mL |
| Conjugation | Unconjugated |
| Purification | Purified from goat serum by ammonium sulphate precipitation followed by antigen affinity chromatography using the immunizing peptide. |
| Dilution Range | Peptide ELISA: antibody detection limit dilution 1:32000. WB: Approx 55kDa band observed in Human Breast cancer lysates (calculated MW of 50.6kDa according to NP_001129071.1;). This molecular weight is routinely observed by other sources. Recomme |
| Formulation | 0.5 mg/ml in Tris saline, 0.02% sodium azide, pH7.3 with 0.5% bovine serum albumin. NA |
| Isotype | IgG |
| Storage Instruction | Store at -20°C on receipt and minimise freeze-thaw cycles. |

TARGET INFORMATION

| | |
|--------------------|--|
| Gene ID | 7042 |
| Gene Symbol | TGFB2 |
| UniProt ID | TGFB2_HUMAN |
| Immunogen Region | Internal |
| Immunogen Sequence | STYTSGDQKTIKSTR |
| Specificity | This antibody is expected to recognize the part representing the latency-associated peptide. |

ADDITIONAL INFORMATION

Note STRICTLY FOR FURTHER SCIENTIFIC RESEARCH USE ONLY (RUO). MUST NOT TO BE USED IN DIAGNOSTIC OR THERAPEUTIC APPLICATIONS.



STJ73581 (0.3 µg/ml) staining of Human Breast cancer lysate (35 µg protein in RIPA buffer). Primary incubation was 1 hour. Detected by chemiluminescence.