

Anti-MDH2 antibody (Internal) (STJ73573)

GENERAL INFORMATION

Product Type	Primary antibodies
Applications	Pep-ELISA/WB/IHC
Host / Source	Goat
Reactivity	Human/Mouse/Rat/Pig/Cow

PRODUCT PROPERTIES

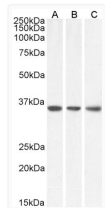
Clonality	Polyclonal
Concentration	0.5 mg/mL
Conjugation	Unconjugated
Purification	Purified from goat serum by ammonium sulphate precipitation followed by antigen affinity chromatography using the immunizing peptide.
Dilution Range	Peptide ELISA: antibody detection limit dilution 1:8000. WB: Approx 35kDa band observed in lysates of cell lines HeLa, HepG2 and NIH3T3 (calculated MW of 35.5kDa according to Human NP_005909.2 and 35.6kDa according to Mouse NP_032643.2). Recomme
Formulation	0.5 mg/ml in Tris saline, 0.02% sodium azide, pH7.3 with 0.5% bovine serum albumin. NA
Isotype	IgG
Storage Instruction	Store at -20°C on receipt and minimise freeze-thaw cycles.

TARGET INFORMATION

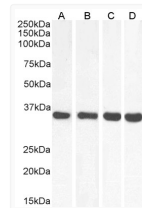
Gene ID	4191
Gene Symbol	MDH2
UniProt ID	MDHM_HUMAN
Immunogen Region	Internal
Immunogen Sequence	TRDDLNTNAT

ADDITIONAL INFORMATION

Note **STRICTLY FOR FURTHER SCIENTIFIC RESEARCH USE ONLY (RUO). MUST NOT TO BE USED IN DIAGNOSTIC OR THERAPEUTIC APPLICATIONS.**



STJ73573 (0.1 µg/ml) staining of HeLa (A), HepG2 (B) and NIH3T3 (C) lysate (35 µg protein in RIPA buffer). Detected by chemiluminescence.



STJ73573 (0.01 µg/ml) staining of Human (A), Mouse (B), Rat (C) and Pig (D) Heart lysate (35 µg protein in RIPA buffer). Detected by chemiluminescence.