

## Anti-BMP4 antibody (Internal) (STJ73557)

### GENERAL INFORMATION

Product Type	Primary antibodies
Applications	Pep-ELISA/WB
Host / Source	Goat
Reactivity	Human

### PRODUCT PROPERTIES

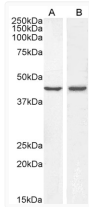
Clonality	Polyclonal
Concentration	0.5 mg/mL
Conjugation	Unconjugated
Purification	Purified from goat serum by ammonium sulphate precipitation followed by antigen affinity chromatography using the immunizing peptide.
Dilution Range	Peptide ELISA: antibody detection limit dilution 1:64000. WB: Approx 40-45kDa band observed in lysates of cell lines A431 and HeLa (calculated MW of 46.6kDa according to NP_001193.2). Recommended concentration: 0.3-1µg/ml.
Formulation	0.5 mg/ml in Tris saline, 0.02% sodium azide, pH7.3 with 0.5% bovine serum albumin. NA
Isotype	IgG
Storage Instruction	Store at -20°C on receipt and minimise freeze-thaw cycles.

### TARGET INFORMATION

Gene ID	<a href="#">652</a>
Gene Symbol	<a href="#">BMP4</a>
UniProt ID	<a href="#">BMP4_HUMAN</a>
Immunogen Region	Internal
Immunogen Sequence	SPKHHSQRARK
Specificity	The immunizing peptide represents the N terminus of the mature protein. Reported variants represent identical protein: NP_570911.2, NP_001193.2, NP_570912.2.

### ADDITIONAL INFORMATION

Note STRICTLY FOR FURTHER SCIENTIFIC RESEARCH USE ONLY (RUO). MUST NOT TO BE USED IN DIAGNOSTIC OR THERAPEUTIC APPLICATIONS.



STJ73557 (0.3µg/ml) staining of A431 (A) and HeLa (B) lysate (35µg protein in RIPA buffer). Primary incubation was 1 hour. Detected by chemiluminescence.