

## Anti-ATF1 antibody (N-Term) (STJ73537)

### GENERAL INFORMATION

Product Type	Primary antibodies
Applications	Pep-ELISA/WB
Host / Source	Goat
Reactivity	Human/Cow

### PRODUCT PROPERTIES

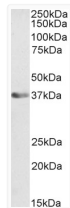
Clonality	Polyclonal
Concentration	0.5 mg/mL
Conjugation	Unconjugated
Purification	Purified from goat serum by ammonium sulphate precipitation followed by antigen affinity chromatography using the immunizing peptide.
Dilution Range	Peptide ELISA: antibody detection limit dilution 1:8000. WB: Approx 37kDa band observed in nuclear lysates of cell line A431 (calculated MW of 29.2kDa according to NP_005162.1). This molecular weight is routinely observed by other sources. Recomm
Formulation	0.5 mg/ml in Tris saline, 0.02% sodium azide, pH7.3 with 0.5% bovine serum albumin. NA
Isotype	IgG
Storage Instruction	Store at -20°C on receipt and minimise freeze-thaw cycles.

### TARGET INFORMATION

Gene ID	<a href="#">466</a>
Gene Symbol	<a href="#">ATF1</a>
UniProt ID	<a href="#">ATF1_HUMAN</a>
Immunogen Region	N-Term
Immunogen Sequence	EDSHKSTTSETAPQ

### ADDITIONAL INFORMATION

Note STRICTLY FOR FURTHER SCIENTIFIC RESEARCH USE ONLY (RUO). MUST NOT TO BE USED IN DIAGNOSTIC OR THERAPEUTIC APPLICATIONS.



STJ73537 (0.1 µg/ml) staining of A431 nuclear cell lysate (35 µg protein in RIPA buffer). Primary incubation was 1 hour. Detected by chemiluminescence.