

## Anti-ASCL1 antibody (79-91) (STJ73536)

### GENERAL INFORMATION

Product Type	Primary antibodies
Applications	Pep-ELISA/WB/IF
Host / Source	Goat
Reactivity	Human/Cow/Mouse/Rat/Dog

### PRODUCT PROPERTIES

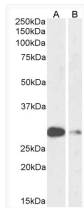
Clonality	Polyclonal
Concentration	0.5 mg/mL
Conjugation	Unconjugated
Purification	Purified from goat serum by ammonium sulphate precipitation followed by antigen affinity chromatography using the immunizing peptide.
Dilution Range	Peptide ELISA: antibody detection limit dilution 1:32000. WB: Approx 28kDa band observed in Mouse and Rat Lung lysates (calculated MW of 24.7kDa according to Mouse NP_032579.2 and 24.9kDa according to Rat NP_071779). Recommended concentration: 0.
Formulation	0.5 mg/ml in Tris saline, 0.02% sodium azide, pH7.3 with 0.5% bovine serum albumin. NA
Isotype	IgG
Storage Instruction	Store at -20°C on receipt and minimise freeze-thaw cycles.

### TARGET INFORMATION

Gene ID	<a href="#">429</a>
Gene Symbol	<a href="#">ASCL1</a>
UniProt ID	<a href="#">ASCL1_HUMAN</a>
Immunogen Region	79-91
Immunogen Sequence	HKSAPKQVKRQRS

### ADDITIONAL INFORMATION

Note STRICTLY FOR FURTHER SCIENTIFIC RESEARCH USE ONLY (RUO). MUST NOT TO BE USED IN DIAGNOSTIC OR THERAPEUTIC APPLICATIONS.



STJ73536 (1µg/ml) staining of Mouse (A) and Rat (B) Lung lysate (35µg protein in RIPA buffer). Primary incubation was 1 hour. Detected by chemiluminescence