

Anti-Endophilin-A1/SH3GL2, Biotinylated antibody (Internal) {Biotin} (STJ73515)

GENERAL INFORMATION

Product Type	Primary antibodies
Applications	Pep-ELISA/WB
Host / Source	Goat
Reactivity	Human/Pig

PRODUCT PROPERTIES

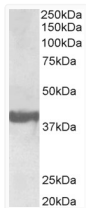
Clonality	Polyclonal
Concentration	0.5 mg/mL
Conjugation	Biotin
Purification	Purified from goat serum by ammonium sulphate precipitation followed by antigen affinity chromatography using the immunizing peptide.
Dilution Range	Peptide ELISA: antibody detection limit dilution 1:64000. WB: Approx 38kDa band observed in Human Brain (Frontal Cortex) lysates (calculated MW of 40.0kDa according to NP_003017.1). Recommended concentration: 0.3-1µg/ml. See non-biotinylated pare
Formulation	0.5 mg/ml in Tris saline, 0.02% sodium azide, pH7.3 with 0.5% bovine serum albumin. NA
Isotype	IgG
Storage Instruction	Store at -20°C on receipt and minimise freeze-thaw cycles.

TARGET INFORMATION

Gene ID	6456
Gene Symbol	SH3GL2
UniProt ID	SH3G2_HUMAN
Immunogen Region	Internal
Immunogen Sequence	CSLEFPTGDSTQPN.

ADDITIONAL INFORMATION

Note STRICTLY FOR FURTHER SCIENTIFIC RESEARCH USE ONLY (RUO). MUST NOT TO BE USED IN DIAGNOSTIC OR THERAPEUTIC APPLICATIONS.



Biotinylated STJ72868 (0.3µg/ml) staining of Human Frontal Cortex lysate (35µg protein in RIPA buffer). Primary incubation was 1 hour. Detected by chemiluminescence.