

Anti-ALDH9A1, Biotinylated antibody (Internal) {Biotin} (STJ73499)

GENERAL INFORMATION

Product Type	Primary antibodies
Applications	Pep-ELISA/WB
Host / Source	Goat
Reactivity	Human/Cow

PRODUCT PROPERTIES

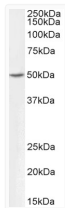
Clonality	Polyclonal
Concentration	0.5 mg/mL
Conjugation	Biotin
Purification	Purified from goat serum by ammonium sulphate precipitation followed by antigen affinity chromatography using the immunizing peptide.
Dilution Range	Peptide ELISA: antibody detection limit dilution 1:16000. WB: Approx 50kDa band observed in Human Kidney lysates (calculated MW of 56.3kDa according to NP_000687.3). This molecular weight is routinely observed by other sources. Recommended concen
Formulation	0.5 mg/ml in Tris saline, 0.02% sodium azide, pH7.3 with 0.5% bovine serum albumin. NA
Isotype	IgG
Storage Instruction	Store at -20°C on receipt and minimise freeze-thaw cycles.

TARGET INFORMATION

Gene ID	223
Gene Symbol	ALDH9A1
UniProt ID	AL9A1_HUMAN
Immunogen Region	Internal
Immunogen Sequence	QKEILDKFTEEVVKQ.

ADDITIONAL INFORMATION

Note STRICTLY FOR FURTHER SCIENTIFIC RESEARCH USE ONLY (RUO). MUST NOT TO BE USED IN DIAGNOSTIC OR THERAPEUTIC APPLICATIONS.



Biotinylated STJ72276 (0.3 µg/ml) staining of Human Kidney lysate (35 µg protein in RIPA buffer). Primary incubation was 1 hour. Detected by chemiluminescence, using streptavidin-HRP and using NAP blocker as a substitute for skimmed milk.