

Anti-RE1-silencing transcription factor antibody (Internal) (STJ73444)

GENERAL INFORMATION

Product Type	Primary antibodies
Applications	Pep-ELISA/WB
Host / Source	Goat
Reactivity	Human

PRODUCT PROPERTIES

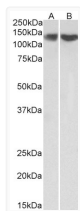
Clonality	Polyclonal
Concentration	0.5 mg/mL
Conjugation	Unconjugated
Purification	Purified from goat serum by ammonium sulphate precipitation followed by antigen affinity chromatography using the immunizing peptide.
Dilution Range	Peptide ELISA: antibody detection limit dilution 1:64000. WB: Approx 140kDa band observed in nuclear lysates of cell lines HEK293 and HeLa (calculated MW of 122kDa according to NP_005603.3). This molecular weight is routinely observed by other so
Formulation	0.5 mg/ml in Tris saline, 0.02% sodium azide, pH7.3 with 0.5% bovine serum albumin. NA
Isotype	IgG
Storage Instruction	Store at -20°C on receipt and minimise freeze-thaw cycles.

TARGET INFORMATION

Gene ID	5978
Gene Symbol	REST
UniProt ID	REST_HUMAN
Immunogen Region	Internal
Immunogen Sequence	PETPGAEDKGGKSSK
Specificity	Reported variants represent identical protein: NP_001180437.1, NP_005603.3

ADDITIONAL INFORMATION

Note STRICTLY FOR FURTHER SCIENTIFIC RESEARCH USE ONLY (RUO). MUST NOT TO BE USED IN DIAGNOSTIC OR THERAPEUTIC APPLICATIONS.



STJ73444 (0.3 µg/ml) staining of HEK293 (A) and HeLa (B) lysate (35 µg protein in RIPA buffer). Primary incubation was 1 hour. Detected by chemiluminescence.