

Anti-AMACR antibody (C-Term) (STJ73437)

GENERAL INFORMATION

Product Type	Primary antibodies
Applications	Pep-ELISA/WB
Host / Source	Goat
Reactivity	Human

PRODUCT PROPERTIES

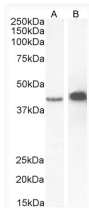
Clonality	Polyclonal
Concentration	0.5 mg/mL
Conjugation	Unconjugated
Purification	Purified from goat serum by ammonium sulphate precipitation followed by antigen affinity chromatography using the immunizing peptide.
Dilution Range	Peptide ELISA: antibody detection limit dilution 1:64000. WB: pprox 40-42kDa band observed in Human Kidney and Liver lysates, and in lysates of cell line CaCo-2 and approx 40-45kDa band observed in lysates of cell line LNCaP (calculated MW of 42).
Formulation	0.5 mg/ml in Tris saline, 0.02% sodium azide, pH7.3 with 0.5% bovine serum albumin. NA
Isotype	IgG
Storage Instruction	Store at -20°C on receipt and minimise freeze-thaw cycles.

TARGET INFORMATION

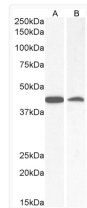
Gene ID	23600
Gene Symbol	AMACR
UniProt ID	AMACR_HUMAN
Immunogen Region	C-Term
Immunogen Sequence	QLNSDKIIESN

ADDITIONAL INFORMATION

Note **STRICTLY FOR FURTHER SCIENTIFIC RESEARCH USE ONLY (RUO). MUST NOT TO BE USED IN DIAGNOSTIC OR THERAPEUTIC APPLICATIONS.**



STJ73437 (0.5 µg/ml) staining of CaCo-2 (A) and LNCaP (B) cell lysate (35 µg protein in RIPA buffer). Detected by chemiluminescence.



STJ73437 (0.5 µg/ml) staining of Human Kidney (A) and Liver (B) lysate (35 µg protein in RIPA buffer). Detected by chemiluminescence.