

Anti-CLEC12A/MICL antibody (C-Term) (STJ73434)

GENERAL INFORMATION

Product Type	Primary antibodies
Applications	Pep-ELISA/WB
Host / Source	Goat
Reactivity	Human

PRODUCT PROPERTIES

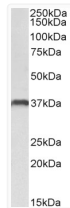
Clonality	Polyclonal
Concentration	0.5 mg/mL
Conjugation	Unconjugated
Purification	Purified from goat serum by ammonium sulphate precipitation followed by antigen affinity chromatography using the immunizing peptide.
Dilution Range	Peptide ELISA: antibody detection limit dilution 1:128000. WB: Approx 37kDa band observed in lysates of cell line U937 (calculated MW of 30.8kDa according to NP_612210.4). The observed molecular weight corresponds to the glycosylated form. Recomm
Formulation	0.5 mg/ml in Tris saline, 0.02% sodium azide, pH7.3 with 0.5% bovine serum albumin. NA
Isotype	IgG
Storage Instruction	Store at -20°C on receipt and minimise freeze-thaw cycles.

TARGET INFORMATION

Gene ID	160364
Gene Symbol	CLEC12A
UniProt ID	CL12A_HUMAN
Immunogen Region	C-Term
Immunogen Sequence	NPVQLGSTYFRE
Specificity	This antibody is expected to recognize all reported isoforms (NP_612210.4; NP_963917.2; NP_001193939.1).

ADDITIONAL INFORMATION

Note STRICTLY FOR FURTHER SCIENTIFIC RESEARCH USE ONLY (RUO). MUST NOT TO BE USED IN DIAGNOSTIC OR THERAPEUTIC APPLICATIONS.



STJ73434 (0.3 µg/ml) staining of U937 lysate (35 µg protein in RIPA buffer). Primary incubation was 1 hour. Detected by chemiluminescence.