

Anti-CD47 antibody (Internal) (STJ73432)

GENERAL INFORMATION

Product Type	Primary antibodies
Applications	Pep-ELISA/IF/IHC
Host / Source	Goat
Reactivity	Human/Dog

PRODUCT PROPERTIES

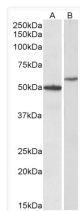
Clonality	Polyclonal
Concentration	0.5 mg/mL
Conjugation	Unconjugated
Purification	Purified from goat serum by ammonium sulphate precipitation followed by antigen affinity chromatography using the immunizing peptide.
Dilution Range	Peptide ELISA: antibody detection limit dilution 1:128000. IHC: Paraffin embedded Human Brain (Cortex). Recommended concentration: 6-7µg/ml. IF: Strong expression of the protein seen in the cytoplasm and membrane of A431 and THP-1 cells, and
Formulation	0.5 mg/ml in Tris saline, 0.02% sodium azide, pH7.3 with 0.5% bovine serum albumin. NA
Isotype	IgG
Storage Instruction	Store at -20°C on receipt and minimise freeze-thaw cycles.

TARGET INFORMATION

Gene ID	961
Gene Symbol	CD47
UniProt ID	CD47_HUMAN
Immunogen Region	Internal
Immunogen Sequence	SNQKTIQPPRK
Specificity	This antibody is expected to recognize both reported isoforms (NP_001768.1; NP_942088.1).

ADDITIONAL INFORMATION

Note STRICTLY FOR FURTHER SCIENTIFIC RESEARCH USE ONLY (RUO). MUST NOT TO BE USED IN DIAGNOSTIC OR THERAPEUTIC APPLICATIONS.



STJ73432 (0.3µg/ml) staining of Human Hippocampus (A) and HeLa (B) lysates (35µg protein in RIPA buffer). Primary incubation was 1 hour. Detected by chemiluminescence.