

## Anti-CAPG antibody (Internal) (STJ73408)

### GENERAL INFORMATION

Product Type	Primary antibodies
Applications	Pep-ELISA/WB/FC
Host / Source	Goat
Reactivity	Human/Dog

### PRODUCT PROPERTIES

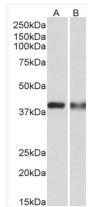
Clonality	Polyclonal
Concentration	0.5 mg/mL
Conjugation	Unconjugated
Purification	Purified from goat serum by ammonium sulphate precipitation followed by antigen affinity chromatography using the immunizing peptide.
Dilution Range	Peptide ELISA: antibody detection limit dilution 1:64000. WB: Approx. 38kDa band observed in lysates of cell lines THP-1, U937 and A431, and in Human Spleen lysates and approx. 37kDa in Human Tonsil lysates (calculated MW of 38.5kDa according to
Formulation	0.5 mg/ml in Tris saline, 0.02% sodium azide, pH7.3 with 0.5% bovine serum albumin. NA
Isotype	IgG
Storage Instruction	Store at -20°C on receipt and minimise freeze-thaw cycles.

### TARGET INFORMATION

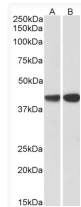
Gene ID	<a href="#">822</a>
Gene Symbol	<a href="#">CAPG</a>
UniProt ID	<a href="#">CAPG_HUMAN</a>
Immunogen Region	Internal
Immunogen Sequence	NIRATERALNWDS
Specificity	This antibody is expected to recognize both reported isoforms (NP_001738.2; NP_001243069.1). Reported variants represent identical protein: NP_001243068.1, NP_001738.2.

### ADDITIONAL INFORMATION

Note **STRICTLY FOR FURTHER SCIENTIFIC RESEARCH USE ONLY (RUO). MUST NOT TO BE USED IN DIAGNOSTIC OR THERAPEUTIC APPLICATIONS.**



STJ73408 (0.3 µg/ml) staining of U937 (A) and Human Spleen (B) lysates (35 µg protein in RIPA buffer). Primary incubation was 1 hour. Detected by chemiluminescence.



STJ73408 (0.3 µg/ml) staining of Peripheral Blood Lymphocytes (STJ73408 lane A), STJ73413 (lane B) lysates (35 µg protein in RIPA buffer). Primary incubation was 1 hour. Detected by chemiluminescence.