

Anti-GSTO1 antibody (Internal) (STJ73401)

GENERAL INFORMATION

Product Type	Primary antibodies
Applications	Pep-ELISA/WB
Host / Source	Goat
Reactivity	Human

PRODUCT PROPERTIES

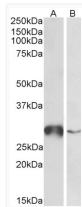
Clonality	Polyclonal
Concentration	0.5 mg/mL
Conjugation	Unconjugated
Purification	Purified from goat serum by ammonium sulphate precipitation followed by antigen affinity chromatography using the immunizing peptide.
Dilution Range	Peptide ELISA: antibody detection limit dilution 1:128000. WB: Approx 28kDa band observed in Human Liver and in Peripheral Blood Mononucleocytes lysates (calculated MW of 27.6kDa according to NP_004823.1). Recommended concentration: 0.5-2µg/ml.
Formulation	0.5 mg/ml in Tris saline, 0.02% sodium azide, pH7.3 with 0.5% bovine serum albumin. NA
Isotype	IgG
Storage Instruction	Store at -20°C on receipt and minimise freeze-thaw cycles.

TARGET INFORMATION

Gene ID	9446
Gene Symbol	GSTO1
UniProt ID	GSTO1_HUMAN
Immunogen Region	Internal
Immunogen Sequence	KEDPTVSALLTSEKD
Specificity	This antibody is expected to recognize all reported isoforms (NP_004823.1; NP_001177931.1; NP_001177932.1).

ADDITIONAL INFORMATION

Note **STRICTLY FOR FURTHER SCIENTIFIC RESEARCH USE ONLY (RUO). MUST NOT TO BE USED IN DIAGNOSTIC OR THERAPEUTIC APPLICATIONS.**



STJ73401 (0.5 µg/ml) staining of Human Liver (A) and Peripheral Blood Lymphocytes (B) lysates (35 µg protein in RIPA buffer). Primary incubation was 1 hour. Detected by chemiluminescence.