

Anti-SERPINB1 antibody (Internal) (STJ73387)

GENERAL INFORMATION

Product Type	Primary antibodies
Applications	Pep-ELISA/WB/IHC
Host / Source	Goat
Reactivity	Human

PRODUCT PROPERTIES

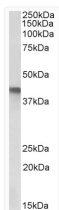
Clonality	Polyclonal
Concentration	0.5 mg/mL
Conjugation	Unconjugated
Purification	Purified from goat serum by ammonium sulphate precipitation followed by antigen affinity chromatography using the immunizing peptide.
Dilution Range	Peptide ELISA: antibody detection limit dilution 1:128000. WB: Approx 43kDa band observed in lysates of cell line A549 (calculated MW of 42.7kDa according to NP_109591.1). Recommended concentration: 1-3µg/ml. Primary incubation was 1 hour. IH
Formulation	0.5 mg/ml in Tris saline, 0.02% sodium azide, pH7.3 with 0.5% bovine serum albumin. NA
Isotype	IgG
Storage Instruction	Store at -20°C on receipt and minimise freeze-thaw cycles.

TARGET INFORMATION

Gene ID	1992
Gene Symbol	SERPINB1
UniProt ID	ILEU_HUMAN
Immunogen Region	Internal
Immunogen Sequence	EVHSRFQSLNADINKR

ADDITIONAL INFORMATION

Note STRICTLY FOR FURTHER SCIENTIFIC RESEARCH USE ONLY (RUO). MUST NOT TO BE USED IN DIAGNOSTIC OR THERAPEUTIC APPLICATIONS.



STJ73387 (1µg/ml) staining of A549 lysate (35µg protein in RIPA buffer). Detected by chemiluminescence.