

Anti-ALDOA antibody (Internal) (STJ73381)

GENERAL INFORMATION

Product Type	Primary antibodies
Applications	Pep-ELISA/WB
Host / Source	Goat
Reactivity	Human/Mouse/Rat/Dog/Cow

PRODUCT PROPERTIES

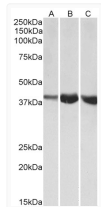
Clonality	Polyclonal
Concentration	0.5 mg/mL
Conjugation	Unconjugated
Purification	Purified from goat serum by ammonium sulphate precipitation followed by antigen affinity chromatography using the immunizing peptide.
Dilution Range	Peptide ELISA: antibody detection limit dilution 1:32000. WB: Approx 38kDa band observed in Human, Mouse and Rat Skeletal Muscle lysates (calculated MW of 39.4kDa according to NP_000025.1). Recommended concentration: 1-3µg/ml.
Formulation	0.5 mg/ml in Tris saline, 0.02% sodium azide, pH7.3 with 0.5% bovine serum albumin. NA
Isotype	IgG
Storage Instruction	Store at -20°C on receipt and minimise freeze-thaw cycles.

TARGET INFORMATION

Gene ID	226
Gene Symbol	ALDOA
UniProt ID	ALDOA_HUMAN
Immunogen Region	Internal
Immunogen Sequence	NSLACQGKYTPSGQ
Specificity	This antibody is expected to recognize both reported isoforms (P_000025.1; NP_001230106.1). Reported variants represent identical protein: NP_908930.1, NP_908932.1, NP_001121089.1, NP_000025.1.

ADDITIONAL INFORMATION

Note STRICTLY FOR FURTHER SCIENTIFIC RESEARCH USE ONLY (RUO). MUST NOT TO BE USED IN DIAGNOSTIC OR THERAPEUTIC APPLICATIONS.



STJ73381 (1µg/ml) staining of Human (A), Mouse (B) and Rat (C) Skeletal Muscle lysates (35µg protein in RIPA buffer). Primary incubation was 1 hour. Detected by chemiluminescence.