

## Anti-fibrinogen beta chain antibody (177-190) (STJ73375)

### GENERAL INFORMATION

Product Type	Primary antibodies
Applications	Pep-ELISA/WB/IHC
Host / Source	Goat
Reactivity	Human/Pig

### PRODUCT PROPERTIES

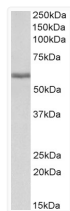
Clonality	Polyclonal
Concentration	0.5 mg/mL
Conjugation	Unconjugated
Purification	Purified from goat serum by ammonium sulphate precipitation followed by antigen affinity chromatography using the immunizing peptide.
Dilution Range	Peptide ELISA: antibody detection limit dilution 1:128000. WB: Approx 60kDa band observed in Human Liver lysates (calculated MW of 55.9kDa according to NP_005132.2). Recommended concentration: 0.01-0.03µg/ml. Primary incubation 1 hour at room tem
Formulation	0.5 mg/ml in Tris saline, 0.02% sodium azide, pH7.3 with 0.5% bovine serum albumin. NA
Isotype	IgG
Storage Instruction	Store at -20°C on receipt and minimise freeze-thaw cycles.

### TARGET INFORMATION

Gene ID	<a href="#">2244</a>
Gene Symbol	<a href="#">FGB</a>
UniProt ID	<a href="#">FIBB_HUMAN</a>
Immunogen Region	177-190
Immunogen Sequence	EKHQLYIDETVNSN
Specificity	This antibody is expected to recognize both reported isoforms (NP_005132.2; NP_001171670.1).

### ADDITIONAL INFORMATION

Note STRICTLY FOR FURTHER SCIENTIFIC RESEARCH USE ONLY (RUO). MUST NOT TO BE USED IN DIAGNOSTIC OR THERAPEUTIC APPLICATIONS.



STJ73375 (0.01µg/ml) staining of Human Liver lysate (35µg protein in RIPA buffer). Detected by chemiluminescence.