

## Anti-alpha-2-macroglobulin antibody (Internal) (STJ73369)

### GENERAL INFORMATION

Product Type	Primary antibodies
Applications	Pep-ELISA/WB/IHC
Host / Source	Goat
Reactivity	Human

### PRODUCT PROPERTIES

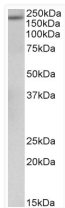
Clonality	Polyclonal
Concentration	0.5 mg/mL
Conjugation	Unconjugated
Purification	Purified from goat serum by ammonium sulphate precipitation followed by antigen affinity chromatography using the immunizing peptide.
Dilution Range	Peptide ELISA: antibody detection limit dilution 1:32000. WB: Approx 200kDa band observed in Human Albumin-depleted Serum lysates (calculated MW of 163kDa according to NP_000005.2). The observed molecular weight corresponds to the glycosylated fo
Formulation	0.5 mg/ml in Tris saline, 0.02% sodium azide, pH7.3 with 0.5% bovine serum albumin. NA
Isotype	IgG
Storage Instruction	Store at -20°C on receipt and minimise freeze-thaw cycles.

### TARGET INFORMATION

Gene ID	<a href="#">2</a>
Gene Symbol	<a href="#">A2M</a>
UniProt ID	<a href="#">A2MG_HUMAN</a>
Immunogen Region	Internal
Immunogen Sequence	TSLTVRVNYKDRSP

### ADDITIONAL INFORMATION

Note STRICTLY FOR FURTHER SCIENTIFIC RESEARCH USE ONLY (RUO). MUST NOT TO BE USED IN DIAGNOSTIC OR THERAPEUTIC APPLICATIONS.



STJ73369 (0.5 µg/ml) staining of Human Albumin-depleted Serum lysate (35 µg protein in RIPA buffer). Detected by chemiluminescence.