

Anti-S100B antibody (Internal) (STJ73354)

GENERAL INFORMATION

Product Type	Primary antibodies
Applications	Pep-ELISA/WB/IHC
Host / Source	Goat
Reactivity	Human

PRODUCT PROPERTIES

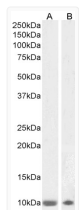
Clonality	Polyclonal
Concentration	0.5 mg/mL
Conjugation	Unconjugated
Purification	Purified from goat serum by ammonium sulphate precipitation followed by antigen affinity chromatography using the immunizing peptide.
Dilution Range	Peptide ELISA: antibody detection limit dilution 1:32000. WB: Approx 10kDa band observed in Human Brain (Olfactory Bulb and Cerebellum) lysates (calculated MW of 10.7kDa according to NP_006263.1). Recommended concentration: 1-3µg/ml. IHC: Par
Formulation	0.5 mg/ml in Tris saline, 0.02% sodium azide, pH7.3 with 0.5% bovine serum albumin. NA
Isotype	IgG
Storage Instruction	Store at -20°C on receipt and minimise freeze-thaw cycles.

TARGET INFORMATION

Gene ID	6285
Gene Symbol	S100B
UniProt ID	S100B_HUMAN
Immunogen Region	Internal
Immunogen Sequence	SHFLEEIKEQEVVD

ADDITIONAL INFORMATION

Note STRICTLY FOR FURTHER SCIENTIFIC RESEARCH USE ONLY (RUO). MUST NOT TO BE USED IN DIAGNOSTIC OR THERAPEUTIC APPLICATIONS.



STJ73354 (1µg/ml) staining of Human Olfactory Bulb (A) and Cerebellum (B) lysates (35µg protein in RIPA buffer). Primary incubation was 1 hour. Detected by chemiluminescence.